

STEM



CATT

Career and Technical Training, LLC

Your Search ends Here!



Table of Contents:

06 Automation & Robotics

17 3D Printers

32 Vinyl Cutters

33 Printers

40 CNC Machines

39 Academia

41 Fixtures

43 Laser Engravers/Cutters

How to Contact Us:

Call Us:

(970)686-0379

Customer Service is available from 8:00AM - 5:00PM MST, Monday through Friday. Our office is available to you from the initial planning stage through installation and for anything in between.

Send Your Request:

jslupe@catt-llc.com

Our sales team can be contacted through this email address for requesting quotes, shipping, order processing instructions as well as purchase order information.

Visit Our Website:

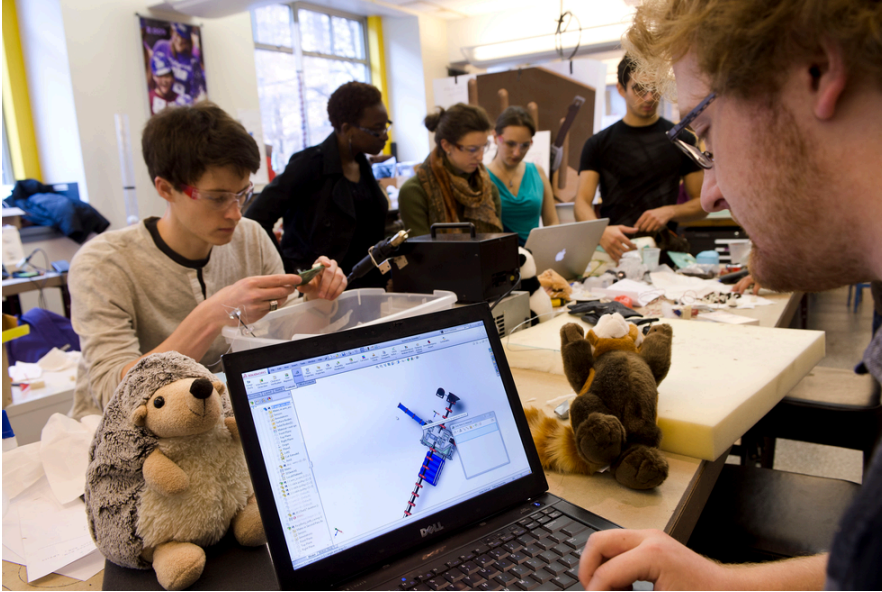
www.catt-llc.com

Our website is continually being updated to better serve your needs and to make product information easier to find. You'll find product specifications, images, and much more.

Call Us Direct
We Will Help You
Locate Your Local Dealer

About CATT llc...

- We market to a diverse customer base offering storage and work place solutions for industry, education, government, and healthcare. With over 5000 furniture and training equipment related products, we offer solutions that other companies cannot. From welding and cosmetology labs to modular storage cabinets and automotive workstations, we have the products to meet your requirements.
- Our company has been family owned and operated for over 20 years with a dedicated team of industry professionals. Our commitment to our customers through service and product quality is a symbol of pride throughout our organization.
- Military training facilities, public educational schools, technical/vocational training centers, and leading auto engine manufacturing plants are all examples of where CATT products are relied upon across the country.



SOLIDWORKS Education Edition, educators and students have access to the same 3D development tools used by countless engineering and design professionals around the world, so they can focus on what's really important-fostering new ideas, solving problems, teamwork, and innovation.

CATT Education Suite Package

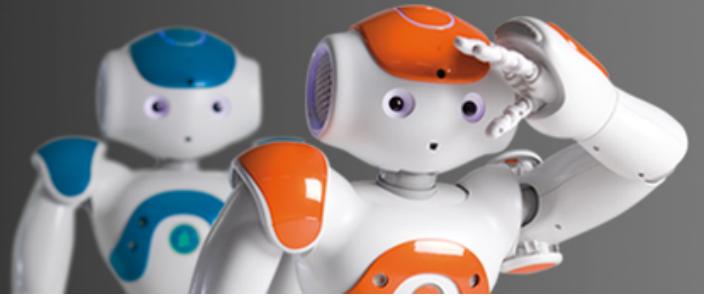
SolidWorks Premium Suite + Online Training + Certifications Testing
\$1,900 for 60 seat site license

The Education Suite includes:

- SOLIDWORKS Premium (3D CAD software)
- SOLIDWORKS Simulation Premium (FEA tools)
- SOLIDWORKS Flow Simulation (CFD tools)
- SOLIDWORKS Motion (Kinematics analysis)
- SOLIDWORKS Plastics Premium (Part and mold filling analysis)
- SOLIDWORKS Sustainability (Environmental impact tools)
- SOLIDWORKS Electrical Professional (Electrical systems design tools)
- SOLIDWORKS CAM Professional (Integrate design and manufacturing process)
- SOLIDWORKS Model Based Definition (Define, organize, and publish 3D PMI)
- SOLIDWORKS Composer (Technical documentation tools)
- SOLIDWORKS Visualize Professional (Develop rich, photo quality content)
- MySOLIDWORKS for students (Training content for everything SOLIDWORKS)
- SOLIDWORKS Certification Testing

RESEARCHERS

Take advantage of the latest in 3D CAD software to solve the world's most complex problems.

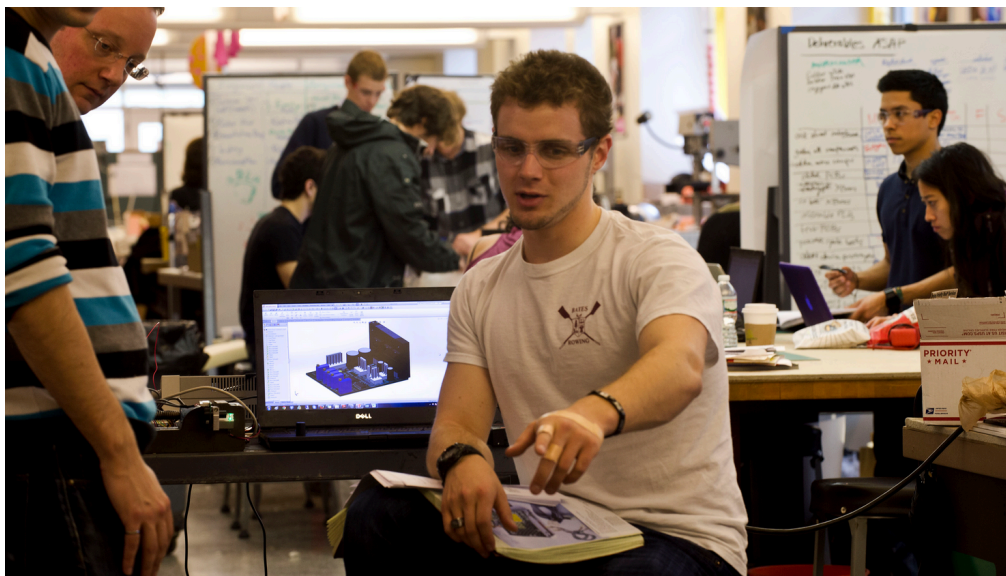


SOLIDWORKS Academic Research Licensing

With the SOLIDWORKS Research Edition, researchers can access the latest in engineering technology, while communicating with other researchers and industrial users around the world.

There are no restrictions for use in publications, industry-funded projects, intellectual property transfer, and patent applications, and no educational watermark allowing you to clearly present your work. The SOLIDWORKS Research Edition follows the commercial release time frame, keeping tools and designs always up-to-date.

Educators choose CATT LLC, a preferred premier reseller, for access to the most competitive pricing and optimized educational packages, ensuring maximum value for your institution.



SOLIDWORKS 3DExperience on the Cloud

In today's competitive job market, students need every advantage they can get. The 3D Experience platform brings new capabilities to educators and students who want to experience the engineering practices of industry leaders in the new global economy.

The Benefits of the Platform for Educators

- Manage all your classes, students, curriculum, assignments, projects, and more! All connected together on a single platform.
- Provide apps to design, simulate, refine, organize, manage, and collaborate on content in real-time.
- Innovate, collaborate, and create great designs anytime, anywhere, from any device—including Macs and mobile devices (cloud apps only)
- Reduce hardware infrastructure costs, IT overhead, and software maintenance.



The 3D Experience platform empowers the education world to maintain learning community, teamwork, and knowledge acquisition.

Even if your students are spread out over thousands of miles!



3DExperience on the Cloud

3DExperience for education goes beyond just design and engineering tools. Your education platform comes loaded with communication and collaboration apps—all in real time.

Via an intuitive, web-based interface, educators can easily create collaborative “communities” to foster collaboration among their students, answer questions, or simply keep them posted on class assignments.

Students can start projects on campus, continue at home, and discuss ideas with their classmates within these communities—speeding up the design cycle.

Built-in cloud storage helps students avoid the risk of drifting out of sync on model revisions or real design work.

Integrated project management tools allow educators to assign projects, and split up responsibilities, with direct links between tasks and models created throughout the project’s life.

PLUS...

With installation as fast as 10 minutes and no IT support required, 3DExperience for education opens a new playground for educators and learners. Almost instantly, you can access the vast field of solutions that have revolutionized worldwide industry processes during the last decades.



Why get Certified?

- **Knowledge and competency Benchmark** - Certifications help you stand out from the crowd and showcase your expertise - a valuable asset in a competitive job market.
- **Relevant job skills for students** - which opens doors to internships and full-time positions.
- **Industry recognized** - in fact, SOLIDWORKS certifications are the most recognized CAD certification by hiring managers.
- **Uniform measure of skills** - Simply saying you have experience in SOLIDWORKS is not enough. Certifications are proof that you have a well rounded understanding of the tools.
- **Money back to your Program** - certifications passed can result in up to \$1,000 back towards your school's program.

SOLIDWORKS Certifications

- **CSWA** - Mechanical Design - Academic
- **CSWA** - Electrical
- **CSWA** - Additive Manufacturing
- **CSWA** - Simulation
- **CSWP** - Mechanical Design - Academic
- **CSWP** - CAM
- **CSWP** - Simulation
- **CSWP** - MBD
- **CSWPA** - Drawing Tools
- **CSWPA** - Mold Making
- **CSWPA** - Sheet Metal
- **CSWPA** - Surfacing
- **CSWPA** - Weldments



SOLIDWORKS Certifications

- Collaborative Business Innovator
- Collaborative Industry Innovator
- 3D Creator
- 3D Sculptor



shown with optional accessories

Dobot Magician

ALL-IN-ONE ROBOT EDUCATION

A truly cutting-edge robotic arm—it can manipulate objects, 3D print, write and draw. It has a graphical programming environment, multiple tool heads, and the capability to work with the Arduino platform. It's a robot for your creativity and desire to develop. With Dobot's exclusive tutorials and lessons, the Magician is the ideal way to learn about robotic arms, hardware development, coding and automation.

- **Net Weight:** 8.8 lbs
- **Base Dimension (Footprint):** 6.2 x 6.2 in
- **Material:** Aluminum Alloy 6061, ABS Engineering Plastic
- **Controller:** Dobot Integrated Controller
- **Robot Mounting:** Desktop
- **Packing Size (LxWxH):** 12 x 9 x 13 in

BEST MULTI-FUNCTIONAL ROBOTIC ARM

The advantages of high precision (0.2mm) and switchable tool heads allow for many uses: 3D printing, pick and place, write and draw, and more. Combining them brings out even more fun, learning, and creativity through unlimited possibilities. Also, Dobot Magician is the first consumer-grade robotic arm that can 3D print.

Contact us for
More
Information!



Dobot Magician E6

The Dobot Magician E6 is crafted to bridge the gap between learning and real-world applications. Designed specifically for education and scientific research, this desktop cobot provides an interactive platform for students and researchers alike. Its compact size and advanced capabilities make it a prime resource for teaching complex concepts in AI, robotics, and smart

- **Net Weight:** 16 lbs
- **Base Dimension (Footprint):** 6.3 x 5 x 4 in
- **Material:** Aluminum Alloy 6061, ABS Engineering Plastic
- **Controller Software:** DobotStudio Pro
- **Robot Mounting:** Desktop

ADVANCED DESIGN AND SAFETY

Featuring a 6-axis design for complex movements and tasks, the Magician E6 ensures a high level of operational safety with its collision detection and indicator light ring. Its streamlined body is not only aesthetically pleasing but also enhances the user's interaction with the robot. Deployment of the Magician E6 is straightforward, thanks to its built-in control box and compact design. Its desktop orientation allows for easy integration into various educational environments without the need for extensive setup or space. Dobot's patented trajectory replay and graphical programming enable users to engage with the robot without in-depth coding knowledge. This approach to operation lowers the barrier to entry, making the Magician E6 an accessible tool for users at all levels of expertise.

Contact us for
More
Information!



Dobot MG400

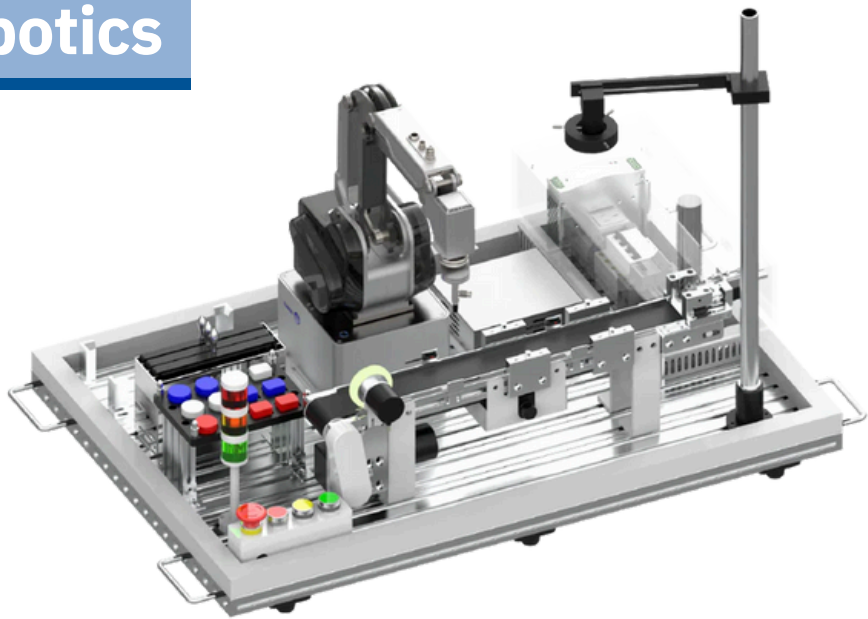
The Dobot MG400 is a testament to innovation and compact design in the world of robotics. With a footprint that's smaller than a piece of A4 paper, this desktop robotic arm is a space-saver without compromising on functionality. It is an embodiment of the phrase "small but mighty," perfect for laboratories, small workshops, and educational environments where space is at a premium but the automation needs are high.

- **Net Weight:** 17 lbs
- **Base Dimension (Footprint):** 7 x 7 in
- **Software:** DobotStudio 2020
- **Robot Mounting:** Desktop

EASE OF USE AND PROGRAMMING FLEXIBILITY

Ease of use is paramount with the MG400. It caters to users of all levels with its intuitive programming options that range from simple drag-and-teach to more sophisticated Lua scripting. Whether you're taking your first steps into robotics or are a seasoned developer, the MG400 adapts to your skill level, allowing you to harness its full potential with minimal learning curve. The MG400 is not just adaptable in terms of space and programming; it's also designed to work collaboratively with human operators. It features advanced safety systems, including collision detection, ensuring a safe working environment. This makes the MG400 a reliable partner in tasks that require a human-robot collaboration, opening up new possibilities in the automation landscape.

Contact us for
More
Information!



Dobot Robot Workstation for MG400 & E6

COLLABORATIVE ROBOT UNIVERSAL TRAINING PLATFORM

Collaborative Robot Universal Training Platform is a teaching platform for vocational schools and enterprise training which integrates a robot, control system, vision system, conveyor belt and other components. It adopts a modular design and can be combined flexibly and easily for automation simulation, such as object detection, grabbing, handling, palletizing, and assembly, as well as teaching projects such as robot system calibration, trajectory tracking, and communication control, helping students acquire skills related to smart robot systems, and improve practical and innovative capabilities effectively.

RICH FUNCTIONS

Use the system to teach robotic system calibration, trajectory tracking, communication and more. By combining with the workpiece models, tasks like object tracking, grabbing, inspection, transportation, palletizing and assembly can be carried out. By combining lightweight collaborative robot (works with CR3/E6/MG400) and flexible modular units, users can create automation tasks easily. The system covers topics such as robotic system, robotic vision system and optional PLC modular system. Users can deal with the majority of automation tasks after learning. The Conveyor Belt Kit can be used independently with the robotic arm itself.

Contact us for
More
Information!



RD080N Robot

Designed specifically for palletizing applications, the palletizer series includes five unique robots, including the RD080N Robot. These robots have payload capacities ranging from 80 kg to 500 kg, suiting most needs. Additionally, Kawasaki's high-speed palletizing robots offer industry-leading work range and reliability. Consequently, they help companies improve production line efficiency and productivity.

Palletizing Robots:

- Payload – 80 kg
- Max. Reach – 2,100 mm



shown with optional accessories

CP Series Palletizing Robots

The CP series palletizing robots feature industry leading cycle times, a broad motion range, a space and energy saving controller, and easy-to-use palletizing software to program the robot's operation. The robots drive the flexible automation of end-of-line and distribution processes in a wide range of industries, and support the highest production line efficiencies. With the lightest maximum payload capacity, the CP180L model's throughput is the highest of the CP series palletizing robots.

Palletizing Robots:

- Payload : 80 – 700 kg
- Max. Reach :2,100 – 3,255 mm

Contact us for
More
Information!



shown with optional accessories

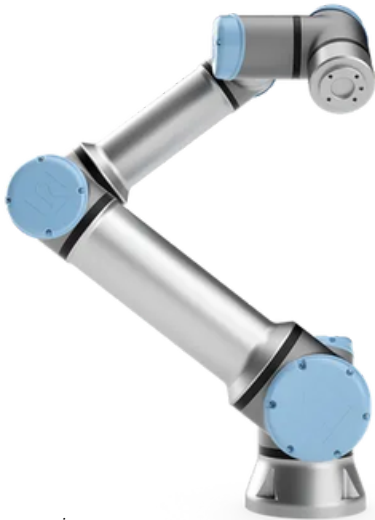
UR20

With a 1750 mm reach and 20 kg payload capacity, UR's UR20 cobot handles more tasks, fits more applications, and assists in more environments than ever before. The UR20, part of Universal Robots' next generation of industrial cobots, takes performance to new heights while maintaining UR's versatility, usability, and small footprint.

BIG THINKING. THAT'S FAR REACHING.

The increased reach scales cobot automation and throughput gains for more demanding, heavier-duty applications. For picking, packing, and palletizing heavy parts, the UR20 boosts efficiency and productivity. It reaches standard EURO pallets and stacks up to 2m high. The UR20 processes larger dimension parts for machinery such as cutting, punching, drilling, machining, and forming. It mounts in any position and easily moves around workplace objects, including machine tending doors. Redesigned from the ground up, the software brings unprecedented motion control capabilities to the joint architecture. It achieves up to 30% greater speed and 25% higher torque within a closed capsule. The UR20's greater payload allows heavier workpiece handling and the option to configure multiple end effectors for better cycle times. It is ideal for manufacturing and assembling large equipment such as diesel engines, drivelines, transmissions, and battery assemblies, often requiring human-robot collaboration.

Contact us for
More
Information!



shown with optional accessories

UR16e Robot (Heavy Duty)

The Universal Robots UR16e robot delivers an impressive 16kg (35.3 lbs.) of payload within a small footprint, and is ideal for use in heavy machine tending, material handling, packaging, and screw and nut driving applications. This powerhouse robot allows for heavier end of arm tooling and multi-part handling, and is especially useful for achieving shorter cycle times.

Palletizing Robots:

- Payload of 16kgs
- Ideal for heavy duty tasks; machine tending, packaging, material removal, etc.
- Reach Radius of 900mm
- Allows for heavier end of arm tooling and multi-part handling
- Useful for achieving shorter cycle times



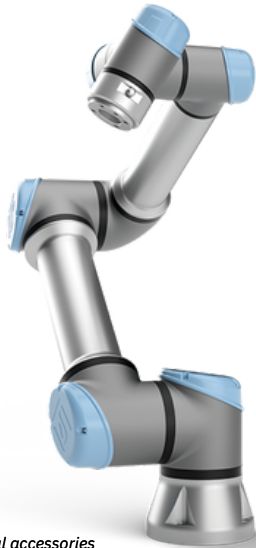
UR10e Robot (Medium-Sized)

The Universal Robots UR10e is an extremely versatile collaborative industrial robot arm with its high payload (10kg) and long reach capability. Its 1300mm reach spans wide workspaces without compromising precision or payload performance. UR10e addresses a wide range of applications in machine tending, palletizing, and packaging.

Palletizing Robots:

- Payload of 10kgs
- UR family's most powerful robot
- Reach Radius of 1300mm
- Ideal for packaging and palletizing
- Covers large differences between different operating areas

Contact us for
More
Information!



shown with optional accessories

UR5e Robot (Lightweight)

Built with the future in mind, the UR5e robot is designed to grow in capability alongside your business, a spring board to improved product quality and productivity, so you will always be able to stay ahead of competition. Equipped with intuitive programming, versatile use and an almost endless list of opportunities for add-ons, the UR5e is able to complement production regardless of your industry, company size or product nature.

Palletizing Robots:

- Ideal for low-weight processing tasks
- Payload of 5kgs
- Reach Radius of 850mm
- Easy to program and fast to set up



UR3e Robot (Ultra-Lightweight)

The UR3e robot is a smaller collaborative table-top robot, perfect for light assembly tasks and automated workbench scenarios. The compact table-top cobot weighs only 24.3 lbs (11 kg), but has a payload of 6.6 lbs (3 kg), ± 360 -degree rotation on all wrist joints, and infinite rotation on the end joint.

Palletizing Robots:

- Payload of 3kgs
- Reach Radius of 500mm
- 360 degree rotation on all wrist joints
- Infinite rotation on the end joint
- Handles high precision tasks and light assembly tasks with ease

Contact us for
More
Information!



shown with optional accessories

Dobot Magician Lite

The Dobot Magician Lite includes numerous software and hardware interaction methods and expansion interfaces in order to maximize students' freedom to create. Through building and playing, students can learn how artificial intelligence and mechanics work. They will be introduced to a world of rudimentary knowledge of robotics and how they can be used in real-world applications.

Excellent Performance & Safe to Use

The Magician Lite is compact and only weighs 2.4kg, making it portable and easy to build an application scenario. Its repeatability positioning is 0.2mm, payload of 0.25kg, and radius range of 340mm. It supports a soft gripper, suction cup, pen gripper and other changeable end tools. The robot has collision detection functionality, making it safe for children to be around.

Magic Box for Unlimited Capabilities

The Magician Lite features an external controller called "Magic Box" that separates the motion control algorithm and user-tasks to allow more convenience for programming and creating. The robot supports Bluetooth and Bluetooth connection. 12 expansion interfaces ensure maximum openness and compatibility.

Graphical Programming (Software)

With the new DOBOT Scratch software platform, students can program and create games by simply dragging and dropping coding blocks together, allowing control of the robot's every move while learning how AI works.

Available kits include:

- Drawing kits
- Industry 4.0 kits
- AI vision kits
- Wireless kits
- Sensor kits

Contact us for
More
Information!



shown with optional accessories

Gears Combat Robot

The GEARS Invention & Design System™ gives teachers the industrial strength tools they need to create world-class engineering and robotics challenges for their students in the comfort of their own classrooms. This heavy-duty mechatronics prototyping kit with industry grade components integrates with a wide array of existing engineering components and third-party kits.

Available kits include:

- Solid foundation for any robotic program
- Rugged combination of motors, metal, and drive system options
- Three unique versions



- Hands-on projects with curriculum resources help students learn math, science, and engineering principles.
- Re-configurable, customizable, and built to last for years.
- Electronics include speed controllers, digital switches, 12-volt battery, charger, wire, and connectors.
- Interfaces with programmable controllers or RC radios.
- Open-ended prototyping platform.
- CAD solid models available for download.
- Precision stainless steel & aluminum drive components.
- All components organized in a storage container for classroom management.
- Used in colleges and high schools across the country.
- Majority of components designed & manufactured in the U.S.



shown with optional accessories

Dart Drones

This course is designed to get students excited about drones and the potential job opportunities with drones. Students will not only leave the course prepared to pass their FAA Part 107 Exam, but they will also have developed their own drone business concept. Students will experience their first drone flight as well as learn important technical skills to safely fly a drone.

Course Objectives:

- Explore the Drone Industry Growth and Opportunities
- Understand Capabilities of Drones
- Learn to Pass the FAA Part 107 Certification Exam
- Understand Keys Elements to Safe Flights
- Learn the Basic of Becoming a Drone Service Provider

Our goal is to make teaching this course a breeze for instructors new to drones.



Expert Curriculum



Quizzes and Final Exams



Adjustable Course Lengths



Train the Trainers



Ongoing Support



Class Discussion Guidelines



Class Activities



Grading Rubrics

- **HyperSpeed**
- **Easy**
- **Quiet**



shown with optional accessories

AFINIA QD330 HIGH-SPEED

Introducing the Afinia QD330, a cutting-edge 3D printer designed to redefine your 3D printing experience. If you're in search of a 3D printer that delivers unmatched speed and precision, your search ends here. The QD330 is well-suited for beginners, individual users, families, and educational institutions.

Build Volume (W × D × H)

8.6 × 8.6 × 8.6 inch

KEY FEATURES:

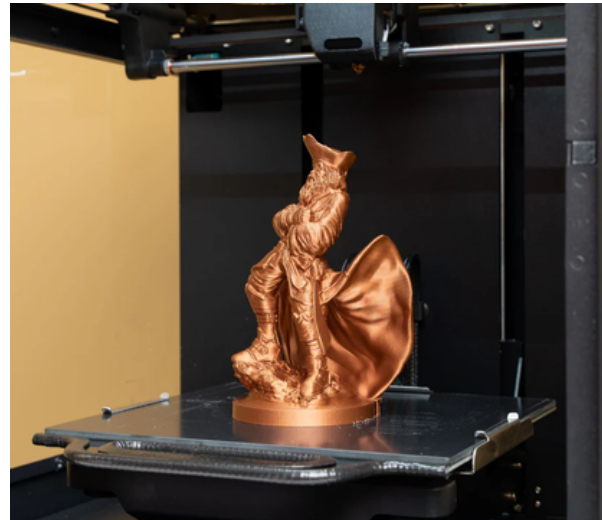
- **Fully Enclosed**
- **Full-auto one-click leveling**
- **3-second quick swap nozzle**
- **Dual air filtration system: HEPA Filter**
- **Lightning-Fast Printing:** With a blazing maximum printing speed of 23.62 in/s
- **Whisper-Quiet Operation:** Operating at a mere 50dB
- **Pro-Quality Results:** thanks to its dual-channel cooling, robust Core XY all-metal frame, and vibration-cancelling technology.
- **Material Versatility:** Print with a wide range of Filament, including PLA, ABS, PETG, PLA-CF, PETG-CF, and more

Contact us for
More
Information!

Contact us for pricing!



shown with optional accessories



AFINIA H440

The Afinia H440 3D printer is perfectly built with ease of use, safety, and reliability combined in its elegant design that will fit on any desktop. The printer produces dimensionally-accurate plastic parts for education, design, or engineering applications. The printer produces dimensionally-accurate plastic parts for education, design, or engineering applications.

Build Volume (W × D × H)

7.9 × 7.9 × 7.9 inch

KEY FEATURES:

- **Hyperspeed**
- **Fully Enclosed**
- **Full-auto leveling**
- **Power loss print recovery filament run-out detection**
- **Air filtration system: HEPA & activated Carbon Filter**
- **Connectivity & Control:** Wi-Fi & USB connectivity, touchscreen interface, mobile app support, print queue with admin control.
- **Performance & Reliability:** Custom temperature settings, power failure protection, filament run-out detection.
- **Usability:** Intuitive touchscreen, easy filament replacement, supports a wide range of materials.

This version provides a bit more detail while still maintaining a concise and reader-friendly format.

Contact us for
More
Information!

Three Material-Specific Print Heads Tailored for Better Material Compatibility

ABS, PLA, and TPU



shown with optional accessories

AFINIA H+1

The Afinia H+1 3D printer combines a large build volume with consistency of performance. Material-specific printheads are included, ensuring optimal print quality and compatibility across a wide range of filament types.

KEY FEATURES:

- **Hyperspeed**
- **Interchangeable Nozzles**
- **Fully Enclosed, heated platform & chamber**
- **Full-auto leveling & height detection**
- **Power loss print recovery filament run-out detection**
- **Air filtration system: HEPA & activated Carbon Filter**
- **Material-specific printhead system for optimal quality and compatibility**
- **2-sided interchangeable build plates**
- **Power loss print recovery filament run-out detection**
- **Customizable temperature controls & filament profiles**
- **Print queue for auto job management**
- **Smart support material technology**
- **Multiple connectivity options (WiFi, USB, LAN, & USB Flash Drive)**

Build Volume (W × D × H)

10 × 8 × 8.8 inch



Contact us for
More
Information!



shown with optional accessories



Raise3D Pro2 Plus

Raise3D's award-winning Pro2 Series is recognized as a benchmark and gold standard for professional 3D printing applications and 24/7 reliability. From Raise3D's Pro2 Series is the Pro2 and the Pro2 Plus, dual extruder 3D printers with high-resolution, for manufacturing and rapid-prototyping projects of varying sizes.

Build Volume (W × D × H)

Single Extrusion Print: 12 × 12 × 23.8 inch

Dual Extrusion Print: 11 × 12 × 23.8 inch

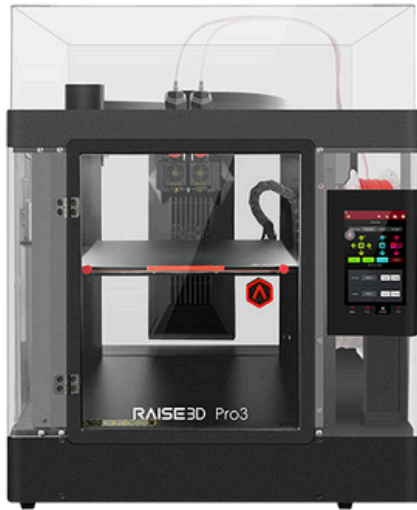
KEY FEATURES:

- **Hyperspeed**
- **Fully Enclosed**
- **Metal build plate for even heat distribution**
- **Power loss print recovery filament run-out detection**
- **Air filtration system: HEPA Filter**
- **Diverse Filament Compatibility (Up to 300°C)**
- **32 Bit Motion Control Board**
- **Wireless Compatibility**
- **Full metal frame for smooth movement and precise positioning**
- **Material Versatility:** Print with a wide range of Filament, including PLA/ ABS/ ASA/ PETG/ PC/ PETG ESD/ TPU 95A/ PVA+
- **Electronic Driven, Dual Extrusion with Retracting Hot Ends; 4× Increased torque performance**

What are the dual extruders for?

Dual extruders enable the 3D printer to produce objects with multiple filaments, such as a water-soluble 3D printing material, and multiple colors.

Contact us for
More
Information!



shown with optional accessories



shown with optional accessories

Rais3D Pro3

Rais3D Pro3 Plus

Forged from the Pro2 Series, Raise3D's newly launched Pro3 Series professional dual extruder 3D printers meet the needs of both production and multi-sized rapid prototyping, with high precision and round-the-clock stable operation. The Pro3 Series is comprised of the Pro3, with a build volume of 11.8 x 11.8 x 11.8in, and the Pro3 Plus, with a build volume of 11.8 x 11.8 x 23.8in, fulfilling the requirements of large-scale production and multi-sized rapid prototyping. A high-quality printer design that includes enhanced features and a smart assistant system known as EVE, all of which make the Pro3 Series dual extruder 3D printers an excellent option for professional 3D printing.

Build Volume (W x D x H)

Single Extruder Print: 11.8 x 11.8 x 11.8 inch
Dual Extruder Print: 10 x 11.8 x 11.8 inch

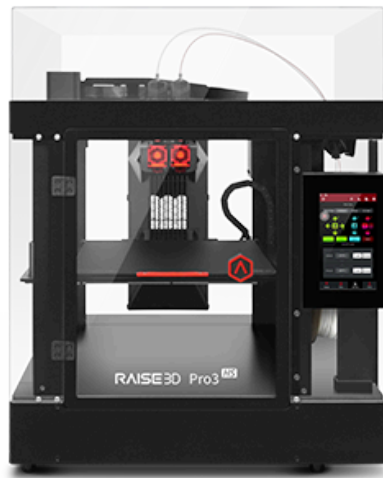
Build Volume (W x D x H)

Single Extruder Print: 11.8 x 11.8 x 23.8 inch
Dual Extruder Print: 10 x 11.8 x 23.8 inch

Key Features

- Fully Enclosed
- Full-auto leveling
- Live Monitoring
- Air filtration system: HEPA Filter
- **Compatible with Hyperspeed upgrade kit (Hyper FFF® technology)**
- Power loss print recovery filament run-out detection
- Lightweight Cable with Digital Temperature Measurement
- Flexible build plate: allows for the effortless removal of 3D printed parts.
- Z-axis rod: stiffness increased by 75% to deliver a more stable performance.

Contact us for
More
Information!



shown with optional accessories



shown with optional accessories

Raise3D Pro3 HS

Raise3D Pro3 Plus HS

The Raise3D Pro3 HS Series is a powerful professional-grade 3D printer that builds upon the Pro3 Series with integrated Hyper FFF® technology. It features leading speeds for printing composite materials with high efficiency and reliability. The upgraded motion control system with a closed-loop stepper motor further improves the precision and accuracy of high-speed printing, making it ideal for printing demanding industrial applications with minimal manual intervention.

Build Volume (W × D × H)

Single Extruder Print: 11.8 × 11.8 × 11.8 inch
Dual Extruder Print: 10 × 11.8 × 11.8 inch

Build Volume (W × D × H)

Single Extruder Print: 11.8 × 11.8 × 23.8 inch
Dual Extruder Print: 10 × 11.8 × 23.8 inch

Key Features

- **Fully Enclosed**
- **Hyperspeed: integrated Hyper FFF® technology**
- **New RFID Sensor**
- **New Printing Build Plate**
- **Air filtration system: HEPA Filter**
- **Strengthened All-Metal Hot Ends and Nozzles**
- **Automatic Filament Unloading**
- **Hyper Core and Industrial High-Performance Materials Available For Printing**
- **Automatic Filament Switching: External 2.5kg Storage Boxes (sold separately)**
- **Air Flow Manager+Auto Bed Leveling+Automatic Pausing with Door/Lid Sensors**



Contact us for
More
Information!





shown with optional accessories



Raise3D E2

The E2 is a desktop 3D printer with independent dual extruders (also known as IDEX). IDEX gives the E2 the ability to perform more advanced functions, such as Mirror Mode and Duplication Mode, making this printer ideal for professional 3D printing. This IDEX 3D printer features Easy Swap Print Heads for added convenience when performing maintenance or routine printing tasks. This desktop 3D printer can print with a variety of different filaments, and its unique extruder gear design enables it to use flexible 3D printing materials, such as TPU, more reliably and with better results.

Build Volume (W × D × H)

Single Extruder Print: 13 × 9.4 × 9.4 inch

Dual Extruder Print: 11.6 × 9.4 × 9.4 inch

Key Features

- Fully Enclosed
- Hyperspeed
- IDEX (Independent Dual Extruders)
- Mirror Mode / Duplication Mode
- Auto Bed Leveling
- Air filtration system: HEPA Filter
- Industry First Video-Assisted Offset Calibration System
- Power Saving Button
- Flexible Build Plate
- Variety of Material Compatibility: Filaments up to 300°C



Contact us for
More
Information!



shown with optional accessories

Raise3D E2CF

The E2CF is an IDEX 3D printer. IDEX stands for independent dual extruders meaning the extruders can operate independently of one another along the same axis during printing to perform more advanced functions. With IDEX, one extruder can remain motionless and off to the side while the second extruder prints the model, minimizing the risk of the nozzle on the motionless extruder interfering with the print job during dual or single extrusion printing.

Build Volume (W × D × H)

Single Extruder Print: 13 × 9.4 × 9.4 inch

Dual Extruder Print: 11.6 × 9.4 × 9.4 inch

The E2CF is an IDEX 3D printer optimized for 3D printing carbon fiber-reinforced filaments.



Key Features

- Fully Enclosed
- New silicon carbide nozzles
- Air filtration system: HEPA Filter
- Hyperspeed
- Nozzles with High Durability
- Dual Direct Drive Extrusion System
- Raise3D Industrial PA12 CF Support Filament
- Sealed Dry Box
- ideaMaker Slicing Profiles
- IDEX (Independent Dual Extruders)
- Auto Bed Leveling
- Flexible Build Plate
- Mirror Mode

Contact us for
More
Information!



shown with optional accessories



**Matched D200-E
and S200-C for
debinding and
sintering processes**

Raise3D Forge1

Forge1 is the first Raise3D's printer able to **print metal** with user-friendly features for a reliable 3D printing experience, making it an excellent option for production and rapid prototyping for small batch metal parts.

Build Volume (W × D × H)

Single Extruder Print: 11.8 × 11.8 × 11.8 inch

Dual Extruder Print: 10 × 11.8 × 11.8 inch



Key Features

- **Auto Bed Leveling**
- **Fully Enclosed**
- **Air filtration system: HEPA Filter**
- **Hyperspeed**
- **Glass Build Plate**
- **Specialized Slicer:** ideaMaker for Metal, providing templates for all processes
- **The prints of Forge1 is compatible:** with (MIM) Metal Injection Molding
- **Dual-head able to print Metal filaments:** including Ultrafuse® 316L, Ultrafuse® 17-4PH, and Ultrafuse® Support Layer

Contact us for
More
Information!



Package Includes:

Forge1

D200-E

S200-C

shown with optional accessories

Raise3D MetalFuse

MetalFuse offers a complete solution, consisting of an indirect metal 3D printing process, paired with a special edition of ideaMaker compatible with MIM equipment. With this solution, MetalFuse's advantages include low overhead costs and the ability to perform batch production. MetalFuse saves more energy and is more environmentally friendly when compared to processes such as CNC and SLM (Selective Laser Melting).

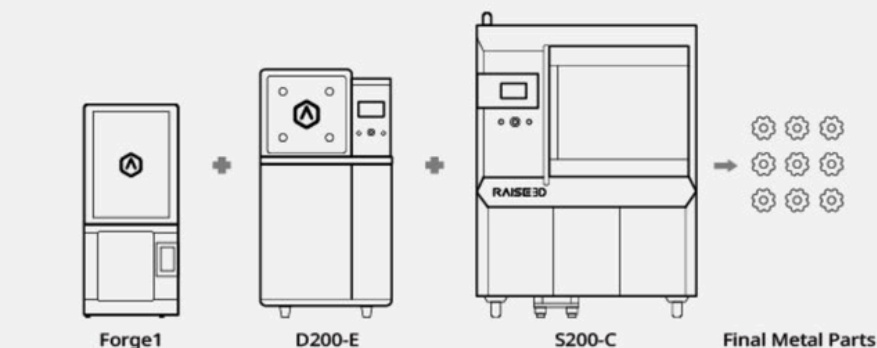
MetalFuse Offers Complete Solution of:

- * FFF metal 3D printing
- * paired with the debinding and sintering of green parts
- * similar to the MIM process

An In-house End-to-end Process

Cost-efficient Print Farm

MetalFuse is a series of products consisting of Forge1, S200-C, and D200-E, which together provide a full production solution. This solution enables maximum confidentiality and delivery speed throughout the entire production process.



Contact us for
More
Information!



shown with optional accessories



Desktop Metal Studio System Printer

Unlike laser-based systems that selectively melt metal powder, the Studio System extrudes bound metal rods—similar to how an FDM printer works. This eliminates many of the safety requirements often associated with metal 3D printing while enabling new features like the use of fully closed-cell infill for lightweight strength.

Key Features

- **Fully Enclosed**
- **Hyperspeed**
- **Air filtration system: HEPA Filter**
- **Build Area:** 12 x 8 x 8 in
- **Print Head:** 250 um high-resolution nozzle
400 um standard-resolution nozzle



Desktop Metal Studio System Furnace

Designed to be the easiest to use sintering furnace made, the Studio System 2 furnace first heats parts to remove all binders from parts, then ramps up the temperature to near-melting to deliver industrial-strength sintering in an office-friendly package. Built-in temperature profiles tuned to every build and material ensure uniform heating and cooling without the residual stresses introduced in laser-based systems. connect with printer

Key Features

- **Fully Enclosed**
- **Retort Size:** 30 x 20 x 17cm (12 x 8 x 6.7 in)
- **Peak Temperature:** 1400°C (2552°F)
- **Environment:**
 1. Argon
 2. Argon + Hydrogen Blend
 3. Inert vacuum sintering

**Office-friendly metal 3D printing in just
2 steps – Print. Sinter.
Available Now.**



shown with optional accessories

EINSCAN-SE V2 3D SCANNER W/ TURNTABLE

The EinScan-SE V2 3D Scanner creates printable 3D models with high accuracy for a range of creative 3D printing applications. The scanner is a perfect fit for educators, designers, and home hobbyists looking to expand the capabilities of their 3D printer. The full-color texture scanning option is great for animation and graphic arts. With a low price point and fast, accurate scanning (~0.1mm), the EinScan-SE V2 delivers detail and performance even for non-technical users.

Key Features

- **Extensive scanning range from small to large**
- **Easy operation, user-friendly workflow and faster scanning**
- **One-click scanning**
- **Automatic calibration without complex settings**
- **Fine details**
- **Highly detailed reproduction of display data**
- **Colour scanning**
- **Easy reproduction of physical 3D models with coloured textures**
- **Compatible with 3D printers**

EINSCAN-SP V2 3D SCANNER W/ TURNTABLE

Designed to be the easiest to use sintering furnace made, the Studio System 2 furnace first heats parts to remove all binders from parts, then ramps up the temperature to near-melting to deliver industrial-strength sintering in an office-friendly package. Built-in temperature profiles tuned to every build and material ensure uniform heating and cooling without the residual stresses introduced in laser-based systems. connect with printer





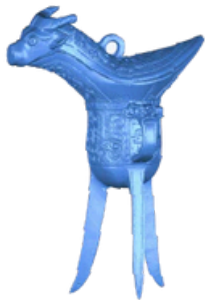
shown with optional accessories

EINSCAN TRANSCAN C 3D SCANNER W/ TRIPOD & TURNTABLE

the Transcan C is a professional-grade 3D scanner that captures exceptionally high resolution and accurate scans of objects from small to medium sized in various industry. In addition, the 12 MP cameras produce rich and detailed textured 3D model which give an intuitionistic image of the physical object. Dual Scan Range Ready-to-Use -- The slide-rail design allows for the scanning range to switch between 150 mm x 96 mm and 300 mm x 190 mm to meet variable objects sizes.

Key Features

- High Fidelity Color
- High-Accuracy Scan Data
- Micro Details Reproduction
- Intelligent Operation



Object size
(The Stupa Hin-Bronze Ware):
150 mm x 80 mm x 210 mm



Contact us for
More
Information!



Inner Smaller Field of View
for scanning small objects



Outer Larger Field of View
for scanning medium large objects



shown with optional accessories

EINSTAR HANDHELD 3D SCANNER

The Einstar is a compact handheld 3D scanner that can easily capture stable and clear details at a fast pace with high quality.

Key Features

- High Quality Data
- High Color Fidelity
- Detail-oriented Enhancement Technology
- Streamlined User Experience
- Stable Outdoor Scanning
- Extremely Easy to Use
- Comfortable for Eyes, Easy to Scan Hair



EINSTAR VEGA WIRELESS HANDHELD 3D SCANNER

The Einstar VEGA is a wireless compact handheld 3D scanner for scanning both in high detail for smaller objects and long range for larger objects, making the Einstar VEGA a 2-in-1 3D scanner. The built-in computing and wireless connectivity make the Einstar VEGA a truly portable device for the worksite, classroom, and museum environments.

ALL-IN-ONE System

You can take the VEGA with you wherever you go.

Scan, save, and share the data at any time, unleashing endless possibilities with 3D vision.

Two Scanning Technologies in One Built-in Computing

Internal Data Archiving

Two 3D Scanners in One

VCSEL For Long Range Scanning

Smooth Scanning under Unlimited Environment

MEMS For Short Range Scanning

Stable Scanning for High-Detail Data



shown with optional accessories

EINSCAN H2 3D SCANNER

The EinScan H2 improves on its predecessor with a 5MP resolution texture camera, enhanced accuracy, and 3 infrared VCSEL projectors for more photorealistic textures and better quality data. Its wide scanning area and adjustable working distance make it suitable for various scenes and objects, both small and large, in narrow or wide spaces. The EinScan H2 is an efficient 3D scanning tool that can revolutionize your workflow. With a built-in color camera and large field of view, EinScan H2 provides high quality 3D data with full color ready-to-use in minutes.

Key Features

- **PHOTOREALISTIC TEXTURE**
- **SUPERIOR ENVIRONMENTAL ADAPTABILITY**
- **HYBRID LIGHT SOURCE**
- **ULTRA-WIDE FOV AND ADJUSTABLE WORKING DISTANCE**
- **OPTIMIZED FOR FACE AND BODY 3D SCANNING**



Contact us for
More
Information!



VersaStudio 24" Vinyl Cutter

The new VersaSTUDIO GS2-24 desktop cutter is compact, powerful, accurate, and easy to use. It is the perfect plotter for starting your customization business, whether it's at home or in a workplace. This new cutter has 40% more cutting force and 70% more cutting speed than the previous model. Achieve consistent results up to 82 feet (25 m). Create without limits using a variety of materials.

Materials

- **Self-Adhesive Vinyl**
- **Papers and Cardboard**
- **Heat transfer material**
- **Reflective Vinyl**
- **Magnetic Sheet**
- **Specialty Materials**
- **...and so much more!**

Key Features

Max Cutting Speed: 33.5 in/s

Max Cutting Force: 500 gf

Cutting Width: 22.9 in

Cutting Length: 984 in

Includes:

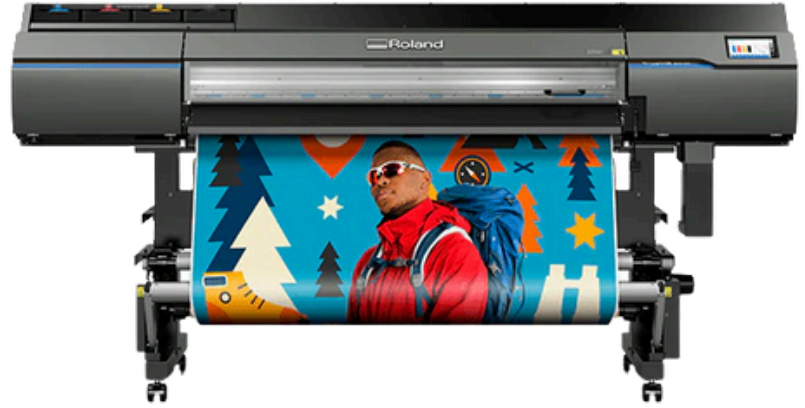
- **CutStudio Software**
- **Printer Stand**



Large Format Printers



TrueVIS-SG3-300



TrueVIS-SG3-540

The TrueVIS SG3 series offers two size options, catering to various business needs and budgets, while delivering enhanced ease and productivity for sign and graphics professionals. Featuring a 7-inch LCD touch-panel, auto-calibration, and True Rich Color 3, these printer/cutters provide user-friendly operation, superior color reproduction, and ultra-vivid output. With low ink costs and high-quality 4-color print/cut capabilities, the SG3 series is ideal for creating diverse graphics like signs, stickers, vehicle wraps, and apparel.

SIZES 30"

APPLICATIONS

- STICKERS
- LABELS
- DECALS
- APPAREL
- PARTIAL VEHICLE WRAPS

SIZE 54"

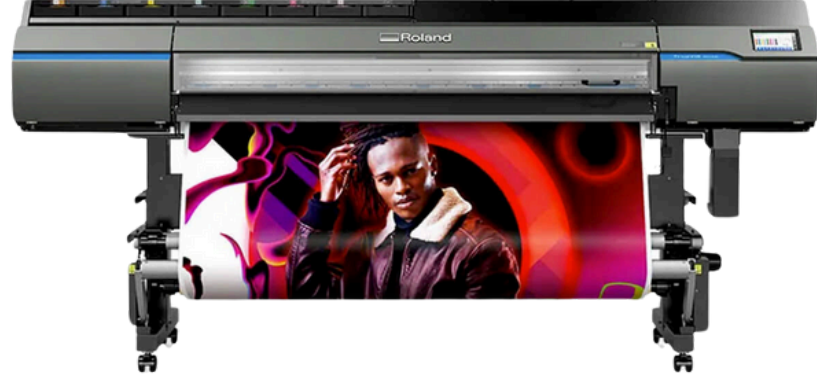
APPLICATIONS

- SIGNAGE
- RETAIL GRAPHICS
- VEHICLE WRAPS
- STICKERS
- LABELS
- APPAREL

Key Features

- New Media Holder
- Perforated Sheet Cut Option
- Smart Media Clamps
- Automated Pinch Rollers
- Nozzle Mask Function
- Custom Crop

Large Format Printer



TrueVIS-VG3-540

TrueVIS-VG3-640

Responding to the demands of sign and graphics professionals, the TrueVIS VG3 series enhances its award-winning printer/cutters with increased automation, usability, and color options. Featuring a 7-inch LCD touch-panel, auto-calibration, and intuitive tools, the VG3 prioritizes productivity. Expanded color gamuts and smoother transitions are achieved through 8-color ink configurations, while four FlexFire printheads ensure accurate, on-brand custom graphics with powerful printing and cutting capabilities.

SIZES
54"

SIZE
64"

APPLICATIONS

- SIGNAGE
- RETAIL GRAPHICS
- VEHICLE WRAPS
- STICKERS
- LABELS
- APPAREL



Key Features

- New Media Holder
- Automated Pinch Rollers
- Perforated Sheet Cut Option
- Nozzle Mask Function
- Smart Media Clamps
- Custom Crop

Desktop UV Printers



VersaUV-LEF2-200

With optimized ease and efficiency, you can print directly onto accessories, giftware, ceramics, and countless other popular products. Create unique, desirable and highly-profitable custom items with the VersaUV LEF2-200 UV flatbed printer that offers brilliant color results, realistic textures and stylish embossed effects.

Materials you can print on:

- **Cylindrical Objects**
- **Photos & Art**
- **Leather & Fabric**
- **Acrylic & Glass**
- **PVC & Plastic**
- **Metal Items**
- **Promotional Products**

Key Features

- Easy-Positioning Fixtures
- Nozzle Mask Function
- New Machine Panel Options

Key Features

- Gloss ECO-UV Ink
- Advanced Ink Printing
- HEAD REFRESHER
- START TIMER FUNCTION

New print dimensions: gloss/matte finishes, realistic textures, 3D embossing. Roland DG Texture System Library provides 72 ready-to-use patterns.





VersaOBJECT MO-240

The VersaOBJECT MO-240 is a powerful STEM tool, embodying advanced UV technology, precise engineering, and scientific principles. Its ability to reproduce complex graphics with vibrant color and accuracy connects to the physics of light, photochemistry, and materials science. The machine's design and functionality showcase engineering concepts like mechanical design, process optimization, and automation. Furthermore, the software and data analysis involved highlight the importance of technology and mathematics. From materials testing and prototyping to robotics and graphic design, the MO-240 provides a platform for hands-on STEM learning, allowing students to explore diverse applications across science, technology, engineering, and mathematics.

Materials you can print on:

- Control Panels
- Phone Cases
- Electronic items
- Nameplates
- Cases
- Signage
- Trophies
- Water Bottles

Key Features

- Transferred Decals
- High Definition Prints
- High Productivity

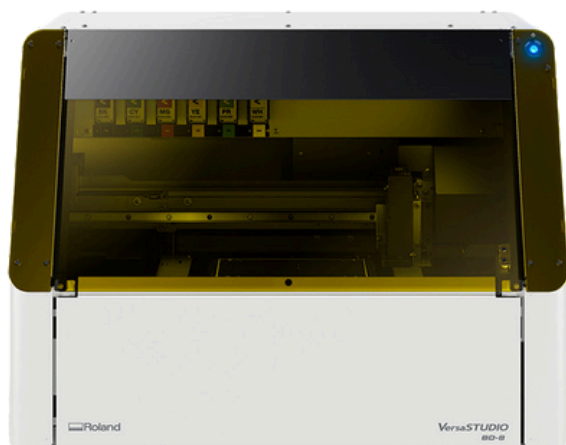
Key Features

- Excellent Usability
- Powerful UV Lamps
- Vacuum Bed

**Top High-Performance
UV Printer**



Desktop UV Printers



VersaStudio BD-8

The VersaSTUDIO BD-8 empowers anyone to create extraordinary product customizations with ease. This compact, desktop UV flatbed printer delivers vibrant, detailed graphics on a wide range of objects, from phone cases to gifts, through direct printing or UV DTF transfers. Ideal for home businesses, small offices, retail, and classrooms, the BD-8 makes adding value and personalized appeal simple and accessible

Key Features

- Customized 3D Items
- Profesional Grade
- Easy to use

Key Features

- Compact Size
- High Safety Standards
- Starter Price



Print on:

- Convex, Concave or irregular surfaces
- 3D Objects and Shapes
- Textured Surface
- Glass
- Wood
- Metal
- Plastics



VersaStudio BN-20A

Start building a t-shirt, poster, sticker, and decal graphics printing business, all from the comfort of your desktop. With the VersaSTUDIO BN-20A t-shirt graphic printing & cutting machine, you can print, cut, and create super high-quality graphics without the super high price tag. Easily the most versatile print devices in their class— print and cut on a huge range of vinyl, films, and media. In addition to traditional graphics, you can create heat transfer graphics for jerseys, hoodies, bags and more. Legendary Roland DG machine reliability combines with exceptional image quality and color to give you the solution you need to succeed.

Materials

- Heat Transfer Graphics & Apparel
- Die-Cut Labels & Decals
- Signs Displays & Posters
- Vehicle Graphics
- Window Graphics
- Art & Wall Decor

Key Features

- Max Cutting Speed: 33.5 in/s
- Max Cutting Force: 500 gf
- Cutting Width: 22.9 in
- Cutting Length: 984 in

Includes:

- CutStudio Software
- Printer Stand



Desktop Printers



BY-20

The all-new VersaSTUDIO BY-20 is the ultimate desktop direct-to-film printer...and more. Simple to use, reliable and efficient, the BY-20 makes decorating apparel and accessories with vibrant, detailed graphics quick and easy – even for those with no prior printing experience. Plus, with the BY-20's integrated contour-cutting functionality, you can also produce heat transfer graphics from PVC sheets – all with a single, affordable compact device.

The VersaSTUDIO BY-20 is a highly versatile desktop device ideal for a range of direct-to-film apparel applications, such as creating custom T-shirts, sportswear, tote bags, and more. You can also use the BY-20's integrated contour cutting capabilities to produce jersey numbers and other heat transfer graphics.

Best for Merch!

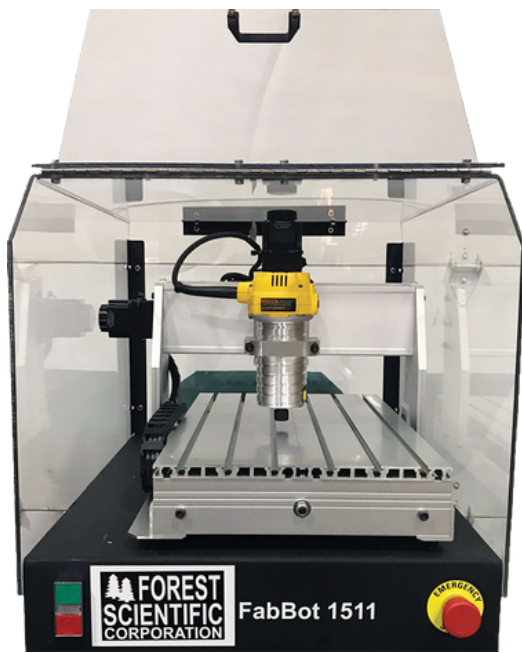


BN2-20

With the next-generation BN2, Roland DG has taken a great thing and made it even better. These compact powerhouses offer significantly faster print speeds, convenient new features, ease of use, and a space-saving design that allows for placement in a home, office, or shop. The BN2 is everything you need to get started in professional print and cut graphics production.

With their ability to print vibrant, detailed graphics on vinyl, film, heat transfer material, and other types of media. This media compatibility, combined with faster print speeds, integrated print/cut functionality, and unsurpassed ease of use. The BN2 series makes creating everything from custom T-shirts and accessories to eye-catching signs, decals,

Best for Signs & Decals!



shown with optional accessories

FabBot Desktop Series CNC Router Models

Created for home shops and schools on a limited budget, these machines come with a 3-year limited warranty, personalized online training, and unlimited phone and online tech support. These models include an aluminum T-slot table, hold downs, 1-1/4HP router, wrenches, CAD/CAM software, and a starter set of bits. Operates on 110V 15A.

Key Points:

- Constructed NSK Linear Rails & Bearings * Fully assembled machine
- * Heavy duty construction
- * 3-D 3-Axis with Continuous Contouring
- * Runs Industry Standard G-Codes
- * On-Screen Simulation
- * Compatible with most CAD/CAM Systems
- * Optional Dust hood

FabBot 24" x 18" x 6" 609 x 457 x 76mm

Optional Enclosure w/Stand for 24"X18" – Call for Pricing

Optional Removable Vac Table Sys2418 – Call for Pricing

FabBot 24" x 24" x 6" 609 x 609 x 76mm

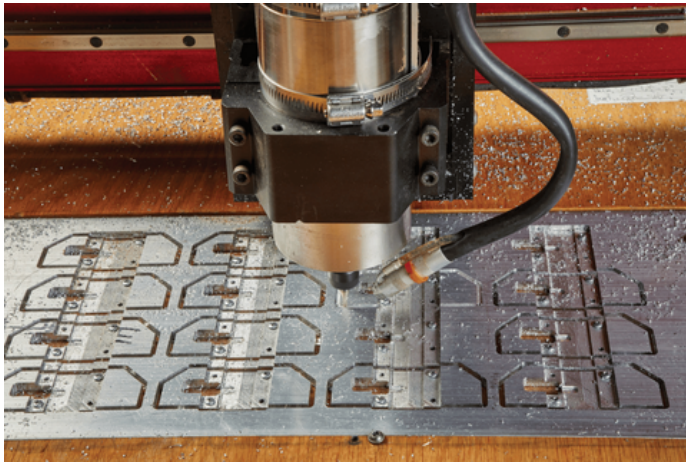
Optional Enclosure w/Stand For 24"X24" – Call for Pricing

Optional Removable Vac Table Sys 2424 – Call for Pricing

FabBot 36" x 24" x 6" 914 x 609 x 76mm

Optional Enclosure w/Stand For 36"X24" – Call for Pricing

Optional Removable Vac Table Sys3624 – Call for Pricing



shown with optional accessories



FabBot Desktop ATC CNC Router

The FabBot ATC CNC Router comes fully assembled with a 1.5HP high frequency ATC spindle and 6 pos ATC. Its heavy-duty construction includes THK linear rails and bearings. Popular features include 3D 3-axis continuous contouring, on-screen simulation, compatibility with most CAD/CAM systems and industry standard G-codes.

APPLICATIONS

- Sign Making
- Plastics Fabrication
- Furniture Making
- Model Making
- Education

Options:

- 6" Rotary 4th Axis – Call for Pricing
- Vacuum Table With Vacuum pump – Call for Pricing
- Digital Reverse engineering probe – Call for Pricing
- Wireless Handheld MPG Jog pendant – Call for Pricing
- Quiet Air Compressor – Call for Pricing
- Dust Collection System – Call for Pricing
- Custom sizes and spindles – Call for Pricing

FabBot ATC 38" x 24" x 6" Turnkey with Standard Enclosure Computer – Call for Pricing



shown with optional accessories



BENCH TOP SERIES CNC ROUTER

Heavy Duty Desktop. Great for tight budgets, limited space, when your shop is upstairs, or getting through narrow doorways

Options:

- BT 24"X 24" 3-1/2 air cooled spindle
- BT 36"X 24" 3-1/2 air cooled spindle
- BT 48" x 24" 3-1/2 air cooled spindle
- BT 60" x 24" 3-1/2 air cooled spindle

The Michelangelo 3D Modeler

Innovative CNC router designed for classroom use: TECH ED, DRAFTING, WOODWORKING, ART. and includes a vacuum table system and dust collection system with a maximum fully enclosed size able to fit through a 36" door.

Options:

- Michelangelo Stepper Version
- Michelangelo Hybrid Servo Version





shown with optional accessories



PRECISION CNC KNEE MILL

Both knee mills and bed mills are used to machine all metal materials, but their designs cater to different needs. Knee mills feature a vertically adjustable table on a "knee," offering versatility for diverse tasks and general-purpose work. Bed mills have a fixed table, providing greater rigidity and stability, making them ideal for heavy-duty, high-precision machining of large workpieces.

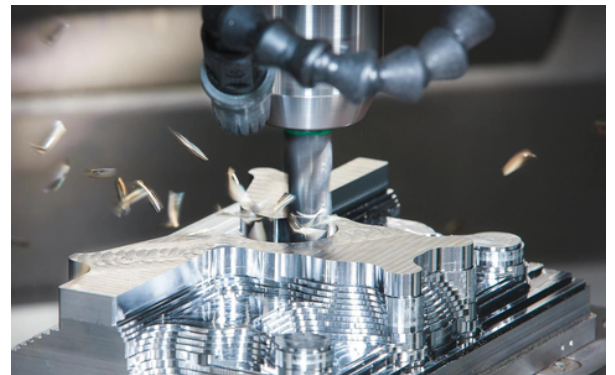
Options:

- Quick Change tool kit with 4 tool holders
- Quick Change drill chuck for above kit
- Quick Change Tapping Head package
- 4" – 4th Axis
- Pneumatic cooler for plastics & metals
- Robotics integration interface

PRECISION CNC BED MILL

Options:

- 2'X20"-2.5 HP Spindle 610mm x 508mm
- 2'X20"-6 HP Spindle 610mm x 508mm
- 2'X20"-12 HP Spindle x 508mm
- 2X20"-6 HP ATC Spindle with 4 Position ATC
- 610mm x 508mm





shown with optional accessories



MITEY LATHE

Metal lathes provide hands-on STEM learning, enabling students to shape raw materials into precision components. They explore engineering, materials science, and physics through machining, mastering skills like measurement and problem-solving. With safety features and training, they prepare for manufacturing careers.

Key Features

- X – Travel 4.25 in
- Center Distance 8 in
- Swing over bed 3.5 in
- Swing over carriage 1.88 in
- 110V 20A

For Aluminum, Brass, Wax, Plastics

Options

MLSV Stepper Standard version
MLHY Hybrid Servo Standard Version
MLSVB Stepper Ball Screw version
MLHYB Hybrid Servo Ball Screw version

MITEY WOOD LATHE

Wood lathes offer a hands-on introduction to woodworking and design. Learning to shape wood into intricate forms and rotational mechanics. This process develops fine motor skills and creative problem-solving. With safety features and instructional support, wood lathes provide an engaging platform for STEM-related projects and artistic expression.

Key Features

18"X 4" Capacity (45 X 10 cm)
110V 20A

Options

MWLS Stepper Version
MWLHS Hybrid Servo





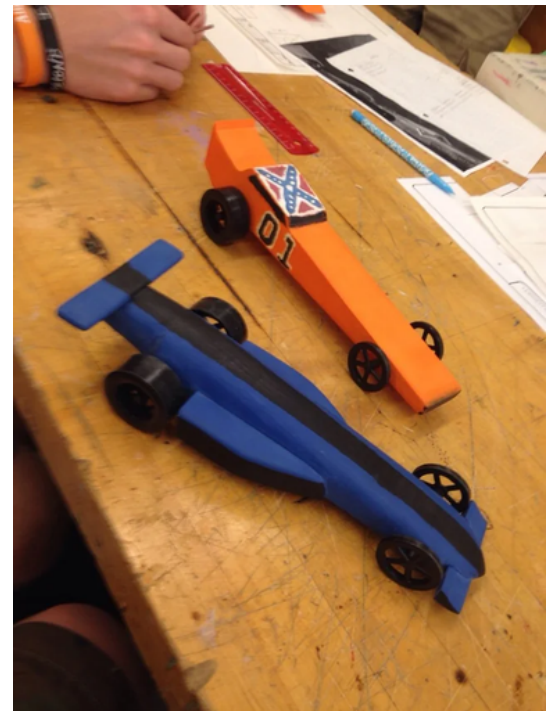
EZ Start Dragsters – Getting Started Package

CO2 car projects seamlessly integrate STEM disciplines, offering students a hands-on learning experience. The science of physics comes alive as students explore Newton's laws and aerodynamics, while materials science is applied in selecting and shaping the car's body. Technological skills are honed through tool usage, measurement, and potentially design software. Engineering principles guide the design process, emphasizing optimization and problem-solving, and mathematical concepts are utilized for measurement, calculation, and data analysis. This multi-faceted approach transforms abstract concepts into tangible results, making CO2 cars a valuable tool for engaging students in practical STEM education.

Learning Values

- **Science** - Newtons Law, Aerodynamics
- **Technology** - Design Process, Problem Solving
- **Engineering** - Engineering Design , Prototyping
- **Math** - Metric Measurements, Calculating Speeds

An inexpensive way to introduce dragsters into your curriculum, this package offers enough materials to build 50 dragsters and the equipment to race them.



Contact us for More Information!



STORAGE CABINETS



MODULAR STORAGE CABINETS



MOBILE WORKSTATIONS



WELDING BOOTHS & EQUIPMENT

Contact us for pricing!

Contact us for More!



**GREENHOUSE
TABLES**



**WORKBENCHES &
WORKSTATIONS**



**STORAGE SHELVING
SYSTEMS**



**MATERIAL
HANDLING RACKS**

Laser Engravers/Cutter



shown with optional accessories

AFINIA: 40W & 60W EMBLASER PRO LASER CUTTER

The large capacity bed allows materials as large as approximately 20 x 12.6 x 2.3 inches in size to be cut or engraved. The installed Air-Assist prevents scorching during cutting and engraving. The Emblaser Pro has an incredibly accurate onboard camera allowing for an easy alignment of materials. The Emblaser Pro comes with USB and Wifi connectivity and operates with LightBurn software for PC or Mac. Once the job is started, the computer can be disconnected from the Emblaser Pro.

Key Features

- **Laser Technology:** Solid-State Diode, Blue Spectrum
- **Beam Spot Size:** 0.12mm (0.005")
- **Cooling:** Internally Liquid Cooled. No external equipment required.
- **Focusing:** Automatic
- **Laser Height Control:** Automatic with detect
- **Workspace Camera:** Super high resolution
- **Air-Assist System:** Internal air-assist system for amazingly clean cuts
- **Fume Extraction:** Built in, Exhaust hose included

SO MANY MATERIALS

- Plywood
- Card
- Fabric
- Hardwood
- Metals
- Leather
- MDF
- Acrylic
- Plastics
- Veneer
- Felt
- Corrugated Cardboard





shown with optional accessories

Universal: Ultra R5000 Smallest Ultra Model

The ULTRA R5000 offers a 32 in x 24 in (813 mm x 610 mm) material processing area. It can be configured in a CO2 only configuration (10.6 or 9.3 μm) or a multiple wavelength configuration (CO2 and fiber). A maximum of 150 watts of laser power is supported in a CO2 only configuration. A maximum of 150 watts CO2 and 50 watts fiber is supported in a multiple wavelength configuration.

Key Features

- **Rapid Configuration**
- **Super Speed Technology**
- **Gas Assist**
- **Line Segment Reduction**
- **Precision Material Independent Autofocus**
- **Design File Geometry Preservation:** A feature that maintains curves in a design file
- **Kerf Compensation:** adjustable control that compensates for material width removed during laser cutting in order to achieve desired dimensions

External Dimensions:

Width: 55 in without Control Panel folded

Depth: 46.32 in

Height: 48 in to top of enclosure e-stop

Material Processing Envelope: 32 x 24 x 12 in

Weight: 400 lbs

Power Requirements: 220V-240V/16A

Various Color-waves:

- **Red**
- **Blue**
- **Green**
- **Yellow**
- **Orange**
- **Black**

Laser Engravers/Cutter



shown with optional accessories

Universal: Ultra X6000 Midsize Ultra Model

The ULTRA X6000 is a high-precision laser material processing system designed for demanding and complex applications in manufacturing, prototyping, and research and development environments. It delivers a higher degree of accuracy, repeatability, and efficiency than other methods available today as well as offers an extensive set of advanced features and capabilities to achieve impeccable quality on the broadest range of materials. The ULTRA X6000 laser system addresses virtually any material challenge in one system.

Key Features

- **Super Speed**
- **Controllable Laser Power Density**
- **Dynamic Energy Stabilization**
- **True Position Laser Pulsing:** optimal laser pulse placement driven by positional feedback from synchronized multi-axis encoders.
- **Precision Material Independent Autofocus**
- **Rapid Reconfiguration:** enables users to install and reinstall any supported ULS CO2 laser source onto any ULS laser system without tools to optimize laser processing for the widest variety of materials
- **Multi-Wave Hybrid Technology:** enables a combination of laser wavelengths (up to three wavelengths) to be focused to the same focal point within the same focal plane

External Dimensions:

- Width:** 63.09 in with Control Panel folded
87.75 in with Control Panel extended
- Depth:** 50.07 in
- Height:** 47.67 in to top of enclosure
74.42 in to top of Light Tower
- Material Processing Envelope:** 36 x 24 x 12 in
- Weight:** 250 kg (550 lbs.)
- Power Requirements:** 220V-240V/20A

WMI Windings Motor Inc.

Motor ID No. 987456-21g

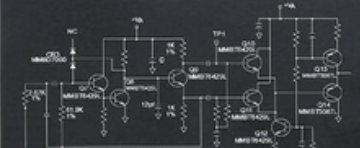
Net Weight: 34 lbs.

Lot #: 1246843939-23e




Date: May 5, 2006

VOLTAGES	
bn	105 % V
bu	102.5 % V
wh	100 % V
bk	97.5 % V
gy	95 % V

POSITION



WMI 24D-162 MOTOR



shown with optional accessories

Universal: Ultra R9000 largest Ultra Model

The ULTRA R9000 is the largest laser system in the ULTRA series with a 48 in x 24 in (1219 mm x 610 mm) material processing area. The ULTRA R9000 can be configured in a CO₂ only configuration (10.6 or 9.3 μ m) or a multiple wavelength configuration (CO₂ and fiber). A maximum of 300 watts of laser power is supported in a CO₂ only configuration. A maximum of 150 watts CO₂ and 50 watts fiber is supported in a multiple wavelength configuration.

Key Features

- **Super Speed**
- **Controllable Laser Power Density**
- **Dynamic Energy Stabilization**
- **Line Segment Reduction**
- **Precision Material Independent Autofocus**
- **Design File Geometry Preservation:** A feature that maintains curves in a design file
- **Rapid Reconfiguration**
- **Kerf Compensation:** adjustable control that compensates for material width removed during laser cutting in order to achieve desired dimensions



External Dimensions:

Width: 71 in without Control Panel folded

Depth: 46.32 in

Height: 48 in to top of enclosure e-stop

Material Processing Envelope: 48 x 24 x 12 in

Weight: 500 lbs

Power Requirements: 220V-240V/16A



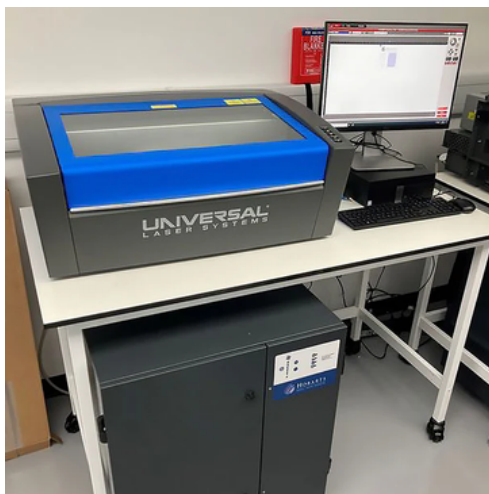
shown with optional accessories

Universal: VLS3.60DT Platform

The VLS Desktop Series are compact and economical entry level laser systems. The series includes the VLS2.30DT and VLS3.60DT. The VLS3.60DT offers a 24 x 12 in (610 x 305 mm) material processing area and CO2 laser power from 10 to 60 watts 10.6 μm or 30 or 50 watt 9.3 μm . The VLS2.30DT offers a 16 x 12 in (406 x 305 mm) material processing area and CO2 laser power from 10 to 30 watts 10.6 μm or 30 watts 9.3 μm .

Key Features

- **SuperSpeed Technology**
- **High Reliability Digital Motors**
- **Laminated Safety Glass**
- **Over-Temp Alert (for fire safety)**
- **Supports material thickness up to 12 in. (305 mm)**
- **Intelligent Laser Energy Management Engine**
- **Supports two laser sources** - up to two CO2 laser sources or one CO2 laser source and one permanently mounted fiber laser source



External Dimensions:

Width: 26 in

Depth: 25 in

Height: 14 in

Material Processing Envelope: 24 x 12 in

Weight: 95 lbs

Power Requirements: 110V/10A; 220V-240V/16A



Universal: VLS3.75 Platform Smallest VLS Model

The VLS Platform Series are free-standing laser systems. The series includes the VLS3.75, VLS 4.75 and VLS6.75. All VLS Platform Series systems offer CO2 laser power from 10 to 75 watts 10.6 μm or 30, 50 or 75 watt 9.3 μm . The VLS6.75 offers a 32 x 18 in (813 x 457 mm) material processing area, the VLS4.75 offers 24 x 18 in (610 x 457 mm) and the VLS3.75 offers 24 x 12 in (610 x 305 mm).

Key Features

- **SuperSpeed Technology**
- **High Reliability Digital Motors**
- **Air-Cooled Laser Source**
- **Laser Pointer / Laser Fan Control**
- **Over-Temp Alert (for fire safety)**
- **HPDFOTM (High Power Density Focusing Optics):** This patented optical assembly allows the laser beam to be focused to a much smaller spot, making it possible to engrave smaller text and produce sharper images at tighter tolerances. Optional. Intelligent Laser Energy Management Engine

External Dimensions:

Width: 36 in

Depth: 30 in

Height: 38 in

Material Processing Envelope: 24 x 12 in

Weight: 235 lbs

Power Requirements: 110V/10A; 220V-240V/5A



Laser Engravers/Cutter



Universal: VLS4.75 Platform

Mid-Size VLS Model

The VLS Platform Series are free-standing laser systems. The series includes the VLS3.75, VLS 4.75 and VLS6.75. All VLS Platform Series systems offer CO2 laser power from 10 to 75 watts 10.6 μm or 30, 50 or 75 watt 9.3 μm . The VLS4.75 is a free-standing platform with a materials processing area of 24 x 18 in (610 x 475 mm). It offers laser power from 10 to 75 watts 10.6 μm or 30, 50 or 75 watts 9.3 μm .

Key Features

- **SuperSpeed Technology**
- **High Reliability Digital Motors**
- **Air-Cooled Laser Source**
- **Laser Pointer / Laser Fan Control**
- **Over-Temp Alert (for fire safety)**
- **1-Touch Laser Photo** - Our popular software package that makes it quick and easy to reproduce stunning photographic images on nearly any material.



External Dimensions:

Width: 36 in.

Depth: 36 in

Height: 39 in

Material Processing Envelope: 24 x 18 in

Weight: 270 lbs

Power Requirements: 110V/10A; 220V-240V/5A



Universal: VLS6.75 Platform Largest VLS Model

The VLS Platform Series are free-standing laser systems. The series includes the VLS3.75, VLS 4.75 and VLS6.75. All VLS Platform Series systems offer CO2 laser power from 10 to 75 watts 10.6 μm or 30, 50 or 75 watt 9.3 μm . The VLS6.75 is a free-standing platform with a material processing area of 32 x 18 in (813 x 475 mm). It offers laser power from 10 to 75 watts 10.6 μm or 30, 50 or 75 watts 9.3 μm .

Key Features

- **SuperSpeed Technology**
- **High Reliability Digital Motors**
- **Air-Cooled Laser Source**
- **Laser Pointer / Laser Fan Control**
- **Over-Temp Alert (for fire safety)**
- **Laser Sources:** Our patented, metal core, air-cooled, free-space slab, CO2 lasers produce excellent beam quality with even power distribution, good near-field and far-field characteristics and long life.

External Dimensions:

Width: 44 in

Depth: 36 in

Height: 39 in

Material Processing Envelope: 32 x 18 in

Weight: 325 lbs

Power Requirements: 110V/10A; 220V-240V/5A



Laser Engravers/Cutter



shown with optional accessories

Universal: PLS6.150D Platform

The PLS6.150D laser system is a free-standing platform offering a 32 x 18 in (813 x 457 mm) material processing area and laser power up to 150 watts with dual 10.6 μm CO₂ lasers. 30, 50, and 75 watt 9.3 μm lasers are also available. The PLS6.150D is available with optional patented SuperSpeed™ technology using a dual laser configuration, pulsing the beams independently, making it possible for 2 lines of raster image to be engraved or marked simultaneously. This enables laser marking and engraving in half the time and vector cutting with higher power.

Key Features

- **SuperSpeed Technology**
- **High Reliability Digital Motors**
- **LCD Display**
- **Laser Pointer / Laser Fan Control**
- **Over-Temp Alert (for fire safety)**
- **Patented Pre-Aligned Laser Sources:**

Laser sources are pre-aligned at the factory and do not need to be internally realigned.

External Dimensions:

Width: 44 in

Depth: 36 in

Height: 39 in

Material Processing Envelope: 32 x 18 in

Weight: 345 lbs

Power Requirements: 220V-240V/15A



Career and Technical
Trainings llc.
128 N 6th St UNIT C, Windsor, CO
80550
www.catt-llc.com
Contact Us for Info and Ordering:
jslupe@catt-llc.com (970)686-0379



Quality • Durability • Service



CATT

Career and Technical Training, LLC