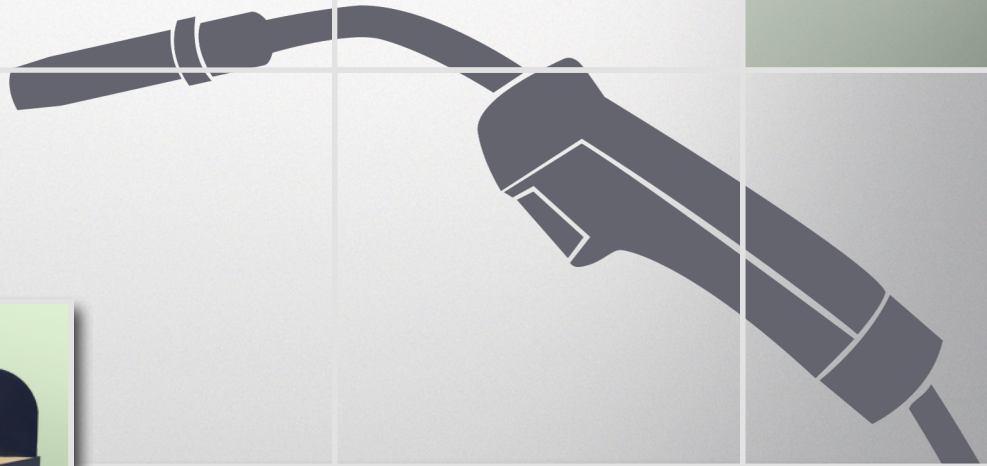
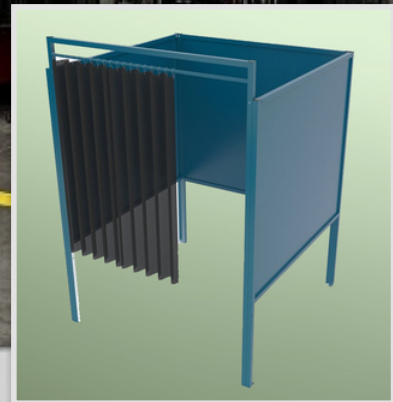


CATT

Career and Technical Training, LLC



WELDING & FABRICATION SYSTEMS & EQUIPMENT



Education to Industry
Solutions for Your Workspace
and Storage Needs

A Brief History

Since 2003, Career and Technical Trainings, LLC has been providing technology and fabrication lab products on Colorado, Wyoming, Utah, and New Mexico. Located in Windsor, CO, our products come with the service support, training, and a dedicated representative to assist. Let our highly trained team help you evaluate the best resources to fit your space and budget.

More Than Just Great Products

We are more than just a catalog of products. Our staff will assist in the design and specification of work stations and storage equipment to assure that your lab space will work with your required equipment.

Site Planning and Room Layout:

Send CATT your project requirements and room dimensions, we will utilize our 20+ years of experience and assist you in achieving the most effective use of your space.

Custom Product Design:

CATT has a product line of over 5000 products to meet your facility's needs. If you can't find exactly what you are looking for, contact us. Our unique ability to design and custom manufacture products is affordable and provides you with the perfect fit.

Factory Trained Installation:

CATT can provide you professional installation services. Contact our customer service department for a free estimate.

See our other product catalogs & brochures @ www.catt-llc.com.

·Industrial Furniture ·Computer - CAD - Office Furniture ·Cosmetology Labs ·Science & Technology

How to Contact US.....



Call Us:

970-686-0379

Customer Service is available from 8:00AM -5:00PM EST, Monday through Friday. Our office is available to you from the initial planning stage through installation and for anything in between.



Email Your Request:

jslupe@catt-llc.com

Our team can be contacted through this email for requesting quotes, shipping, customer service, order processing instructions, as well as purchase order information.



Visit Our Website:

www.catt-llc.com

Our website is continually being updated to better serve your needs and to make product information easier to find. You'll find product specifications, assembly instructions, product images, and much more.



Visit the Website or Call Us Direct!

Zero Compromise Construction

Our products are built to last under extensive use in both industrial and educational settings. We use only the highest quality materials in the manufacturing of all our products while utilizing the latest technologies. Our customer service team has established a 20+ year loyalty with our customers through an unsurpassed commitment to their satisfaction.

- MADE IN THE USA Industry Leading
- Limited Lifetime Warranty Heavy Gauge
- Steel vs Thinner Gauge Continuous
- Welding vs Spot Welding Top Quality
- Hardware Components Designed for Use in
- Schools and Industry Durable Metal
- Finishes

WELDING BOOTHS

WELDING TABLES

CUTTING / GRINDING TABLES

VENTILATION

ACCESSORIES

STORAGE SOLUTIONS

WORKSPACE SOLUTIONS



Quality Team Members:

"The measure of a successful company is not solely based on product quality or price but on the commitment of the people who walk through its doors every day. I am proud to say that our company has an outstanding staff that is dedicated to reaching our goals, exceeding customer satisfaction, and upholding our mission statement."

– Bruce Greene, President



Our GB Series welding booths are an industry standard for industrial and educational facilities. Booths are constructed using all welded heavy gauge tube steel with non-conducting fire resistant panels. Booth doors are available with full strip curtain doors or partial viewing windows. We offer booths in multiple sizes and configurations to meet your project requirements.

- Constructed of heavy gauge 1-1/4" tubular steel with non-conducting, asbestos-free, fire resistant panels. Available with optional steel reinforcement sheets between fire resistant panels.
- Overall Height: 84" Door Opening.
- #10 shade observation window available on some models.
- Door panel is reversible to allow left or right hand entry.

NOTE:

Booths are configured and sized as starters and add-on units.

Starter units are provided with two side panels and add-on booths have one.

Sizing Example: The GB series 5' x 5' starter has two side panels and will measure 61.25" OAW x 60.00"D.

The GB series 5' x 5' add-on has one side panel and measures 60.00" OAW x 60.00"D.



Starter Booth
(2 Side Panels)



Add-On Booth
(1 Side Panel)

Example: Four 5' x 5' booths are to be lined up on one wall. One starter booth is required to start the row. Next use three add-on booths to complete the row. This will create your bank of 4 booths bolted together in series. The overall width of the 4 booths would be 241.25 inches.

Window Front / Free Standing Booth

Booth Size*	Door Size	Window Size	Type	Part No.:
48"W x 48"D	35.50"W	10.00"W	Starter	GB-74.04.S
			Add-On	GB-74.04.A
48"W x 60"D	35.50"W	10.00"W	Starter	GB-724.S
			Add-On	GB-724.A
60"W x 60"D	27.50"W	30.00"W	Starter	GB-725.S
			Add-On	GB-725.A
60"W x 72"D	27.50"W	30.00"W	Starter	GB-7256.S
			Add-On	GB-7256.A
72"W x 72"D	39.50"W	30.00"W	Starter	GB-7266.S
			Add-On	GB-7266.A

*Add 1.25" to listed size for OAW of starter booths. See Pg.4 for more info.



**Strip curtain entry option:
Add .SC to end of Part No.**

*Optional bronze strip curtain door fronts available. Booths come standard with a one piece curtain style door.

For steel reinforced panels add .STL to End of Part No's.
*Steel sheet between fire resistant panels.



Window Front / Wall Mounted Booth

Booth Size*	Door Size	Window Size	Type	Part No.:
48"W x 48"D	35.50"W	10.00"W	Starter	GB-74.S
			Add-On	GB-74.A
48"W x 60"D	35.50"W	10.00"W	Starter	GB-724.02.S
			Add-On	GB-724.02.A
60"W x 60"D	27.50"W	30.00"W	Starter	GB-725.02.S
			Add-On	GB-725.02.A
60"W x 72"D	27.50"W	30.00"W	Starter	GB-7256.02.S
			Add-On	GB-7256.02.A
72"W x 72"D	39.50"W	30.00"W	Starter	GB-7266.02.S
			Add-On	GB-7266.02.A

*Add 1.25" to listed size for OAW of starter booths. See Pg.4 for more info.



**Strip Curtain Entry Option:
Add .SC to End of Part No.**

*Optional bronze strip curtain door fronts available. Booths come standard with a one piece curtain style door.

For steel reinforced panels add .STL to End of Part No's.
*Steel sheet between fire resistant panels.



All Curtain Front / Free Standing Booth



For steel reinforced panels add .STL to End of Part No's.
 *Steel sheet between fire resistant panels.

Booth Size*	Door Size	Type	Part No.:
48"W x 48"D	43.00"W	Starter	GB-74.04.S-CO
		Add-On	GB-74.04.A-CO
48"W x 60"D	43.00"W	Starter	GB-724.S-CO
		Add-On	GB-724.A-CO
60"W x 60"D	55.00"W	Starter	GB-725.S-CO
		Add-On	GB-725.A-CO
60"W x 72"D	55.00"W	Starter	GB-7256.S-CO
		Add-On	GB-7256.A-CO
72"W x 72"D	67.00"W	Starter	GB-7266.S-CO
		Add-On	GB-7266.A-CO

*Add 1.25" to listed size for OAW of starter booths. See Pg.4 for more info.

Strip curtain entry option: Add .SC to end of Part No.

*Optional bronze strip curtain door fronts available. Booths come standard with a one piece curtain style door.



All Curtain Front / Wall Mounted Booth



For steel reinforced panels add .STL to End of Part No's.
 *Steel sheet between fire resistant panels.

Booth Size*	Door Size	Type	Part No.:
48"W x 48"D	43.00"W	Starter	GB-74.S-CO
		Add-On	GB-74.A-CO
48"W x 60"D	43.00"W	Starter	GB-724.02.S-CO
		Add-On	GB-724.02.A-CO
60"W x 60"D	55.00"W	Starter	GB-725.02.S-CO
		Add-On	GB-725.02.A-CO
60"W x 72"D	55.00"W	Starter	GB-7256.02.S-CO
		Add-On	GB-7256.02.A-CO
72"W x 72"D	67.00"W	Starter	GB-7266.02.S-CO
		Add-On	GB-7266.02.A-CO

*Add 1.25" to listed size for OAW of starter booths. See Pg.4 for more info.

Strip Curtain Entry Option: Add .SC to End of Part No.

*Optional bronze strip curtain door fronts available. Booths come standard with a one piece curtain style door.



Panel Front / Free Standing Booth

Booth Size*	Door Size	Type	Part No.:
48"W x 48"D	35.50"W	Starter	GB-74.05.S
		Add-On	GB-74.05.A
48"W x 60"D	35.50"W	Starter	GB-724.01.S
		Add-On	GB-724.01.A
60"W x 60"D	27.50"W	Starter	GB-725.01.S
		Add-On	GB-725.01.A
60"W x 72"D	27.50"W	Starter	GB-7256.01.S
		Add-On	GB-7256.01.A
72"W x 72"D	39.50"W	Starter	GB-7266.01.S
		Add-On	GB-7266.01.A

*Add 1.25" to listed size for OAW of starter booths. See Pg.4 for more info.



Strip curtain entry option:
Add .SC to end of Part No.

*Optional bronze strip curtain door fronts available. Booths come standard with a one piece curtain style door.

For steel reinforced panels add .STL to End of Part No's.
*Steel sheet between fire resistant panels.



Panel Front / Wall Mounted Booth

Booth Size*	Door Size	Type	Part No.:
48"W x 48"D	35.50"W	Starter	GB-74.01.S
		Add-On	GB-74.01.A
48"W x 60"D	35.50"W	Starter	GB-724.03.S
		Add-On	GB-724.03.A
60"W x 60"D	55.00"W	Starter	GB-725.03.S
		Add-On	GB-725.03.A
60"W x 72"D	55.00"W	Starter	GB-7256.03.S
		Add-On	GB-7256.03.A
72"W x 72"D	67.00"W	Starter	GB-7266.03.S
		Add-On	GB-7266.03.A

*Add 1.25" to listed size for OAW of starter booths. See Pg.4 for more info.



Strip Curtain Entry Option:
Add .SC to End of Part No.

*Optional bronze strip curtain door fronts available. Booths come standard with a one piece curtain style door.

For steel reinforced panels add .STL to End of Part No's.
*Steel sheet between fire resistant panels.



Demonstration Window / Free Standing



Booth Size*	Door Size	Window Size	Type	Part No.:
48"W x 48"D	35.50"W	10.00"W x 24.00"H	Starter	GB-74.04.S-DM
			Add-On	GB-74.04.A-DM
48"W x 60"D	35.50"W	10.00"W x 24.00"H	Starter	GB-724.S-DM
			Add-On	GB-724.A-DM
60"W x 60"D	27.50"W	30.00"W x 24.00"H	Starter	GB-725.S-DM
			Add-On	GB-725.A-DM
60"W x 72"D	27.50"W	30.00"W x 24.00"H	Starter	GB-7256.S-DM
			Add-On	GB-7256.A-DM
72"W x 72"D	39.50"W	30.00"W x 24.00"H	Starter	GB-7266.S-DM
			Add-On	GB-7266.A-DM

*Add 1.25" to listed size for OAW of starter booths. See Pg.4 for more info.

**Strip curtain entry option:
Add .SC to end of Part No.**

*Optional bronze strip curtain door fronts available. Booths come standard with a one piece curtain style door.



For steel reinforced panels add .STL to End of Part No's.

*Steel sheet between fire resistant panels.

Demonstration Window / Wall Mounted



Booth Size*	Door Size	Window Size	Type	Part No.:
48"W x 48"D	35.50"W	10.00"W x 24.00"H	Starter	GB-74.S-DM
			Add-On	GB-74.A-DM
48"W x 60"D	35.50"W	10.00"W x 24.00"H	Starter	GB-724.02.S-DM
			Add-On	GB-724.02.A-DM
60"W x 60"D	27.50"W	30.00"W x 24.00"H	Starter	GB-725.02.S-DM
			Add-On	GB-725.02.A-DM
60"W x 72"D	27.50"W	30.00"W x 24.00"H	Starter	GB-7256.02.S DM
			Add-On	GB-7256.02.A-DM
72"W x 72"D	39.50"W	30.00"W x 24.00"H	Starter	GB-7266.02.S-DM
			Add-On	GB-7266.02.A-DM

*Add 1.25" to listed size for OAW of starter booths. See Pg.4 for more info.

**Strip Curtain Entry Option:
Add .SC to End of Part No.**

*Optional bronze strip curtain door fronts available. Booths come standard with a one piece curtain style door.



For steel reinforced panels add .STL to End of Part No's.

*Steel sheet between fire resistant panels.

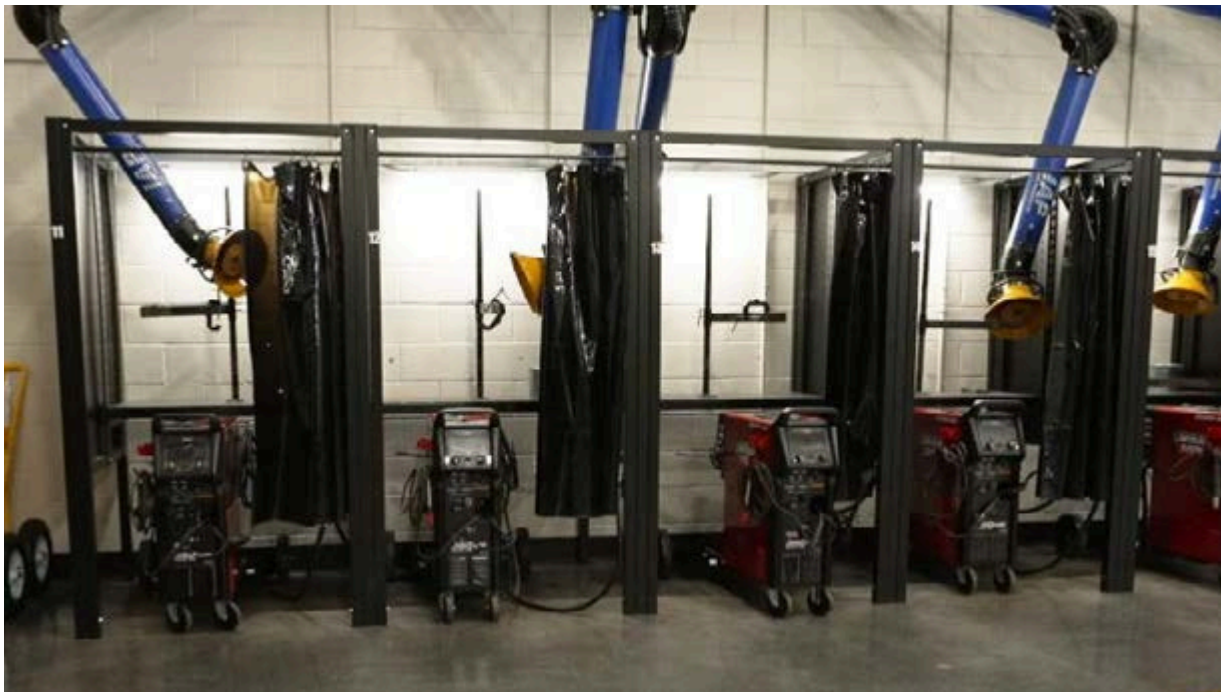
HD Heavy Duty Welding Booths

Our GB series welding booths are also available in a heavy duty version. These booths are ideal for industrial applications, high use, or institutional areas. The HD welding booths are constructed of welded heavy wall 2" tubular steel frames with 16ga steel panel inserts.

- Constructed of heavy wall 2" x 2" tube frames.
- 16ga Steel panel inserts.
- Height: 84"
- One piece curtain front included.
Optional strip curtain entry (.SC part number).
- Note: Booths are configured as starters and add-on units.

Strip Curtain Entry Option:
Add .SC to End of Part No.

*Optional bronze strip curtain door fronts available. Booths come standard with a one piece curtain style door.



All Curtain Front / Free Standing Booth

Booth Size*	Door Size	Type	Part No.:
48"W x 48"D	42.00"W	Starter	GBHD-74.04.S-CO
		Add-On	GBHD-74.04.A-CO
48"W x 60"D	42.00"W	Starter	GBHD-724.S-CO
		Add-On	GBHD-724.A-CO
60"W x 60"D	54.00"W	Starter	GBHD-725.S-CO
		Add-On	GBHD-725.A-CO
60"W x 72"D	54.00"W	Starter	GBHD-7256.S-CO
		Add-On	GBHD-7256.A-CO
72"W x 72"D	66.00"W	Starter	GBHD-7266.S-CO
		Add-On	GBHD-7266.A-CO

*Add 2" to listed size for OAW of starter booths. See Pg.4 for more info.

All Curtain Front / Wall Backed Booth

Booth Size*	Door Size	Type	Part No.:
48"W x 48"D	42.00"W	Starter	GBHD-74.S-CO
		Add-On	GBHD-74.A-CO
48"W x 60"D	42.00"W	Starter	GBHD-724.02.S-CO
		Add-On	GBHD-724.02.A-CO
60"W x 60"D	54.00"W	Starter	GBHD-725.02.S-CO
		Add-On	GBHD-725.02.A-CO
60"W x 72"D	54.00"W	Starter	GBHD-7256.02.S-CO
		Add-On	GBHD-7256.02.A-CO
72"W x 72"D	66.00"W	Starter	GBHD-7266.02.S-CO
		Add-On	GBHD-7266.02.A-CO

*Add 2" to listed size for OAW of starter booths. See Pg.4 for more info.

NOTE: Any GB Series Booth is Available in the HD Version.
Add HD to the Part No. / Example: GBHD-74.S-CO

Economy Modular Panel Booths

Our GBE Series welding booths are constructed with 2"x2" square tube uprights with rigid formed steel side panels that bolt between uprights. Booths come in starter and add on units. Each row of booths will require one starter unit. See page 4 for more starter/add-on details.

- Constructed of 2" x 2" square tube support posts.
- Formed steel side panels mount between uprights.
- Overall height: 84"
- One piece all curtain front included.
- Optional strip curtain entry. (.SC part number)
- Note: Booths are configured as starters and add-on units.

Strip Curtain Entry Option: Add .SC to End of Part No.

*Optional bronze strip curtain door fronts available. Booths come standard with a one piece curtain style door.



Free Standing Booth



Booth Size*	Door Size	Type	Part No.:
48"W x 48"D	44.00"W	Starter	GBE-4848-F.S
		Add-On	GBE-4848-F.A
60"W x 60"D	56.00"W	Starter	GBE-6060-F.S
		Add-On	GBE-6060-F.A
72"W x 72"D	68.00"W	Starter	GBE-7272-F.S
		Add-On	GBE-7272-F.A

Wall Backed Booth



Booth Size*	Door Size	Type	Part No.:
48"W x 48"D	44.00"W	Starter	GBE-4848-W.S
		Add-On	GBE-4848-W.A
60"W x 60"D	56.00"W	Starter	GBE-6060-W.S
		Add-On	GBE-6060-W.A
72"W x 72"D	68.00"W	Starter	GBE-7272-W.S
		Add-On	GBE-7272-W.A

HD Pre-Configured Booth Package

- HD Free Standing Booth.
- Constructed of heavy wall 2" x 2" tube frames.
- 16ga Steel panel inserts.
- One piece curtain front.
- Note: Booths are configured as starters and add-on units.

Package Includes:

- GFA-401-54 - 6" Telescoping fume arm.
- GT-776.STL (60"W booth) or GT-778.STL (72"W booth)
- 3/8" Steel top welding table.
- GWP-2 Weld positioner.
- LED booth light.
- Tool panel.
- Hose hook.
- Fume arm stanchion.

Booth Size*	Door Size	Type	Part No.:
60"W x 60"D x 84"H	54.00"W	Starter	GBHD-6060-PCB.S
		Add-On	GBHD-6060-PCB.A
72"W x 72"D x 84"H	66.00"W	Starter	GBHD-7272-PCB.S
		Add-On	GBHD-7272-PCB.A

*Add 2" to listed size for OAW of starter booths. See Pg.4 for more info.



Self Contained Filtered Booth

- 10 & 12 Ga. welded steel cabinet construction.
- Size: 48"W x 36"D x 97"H
- Adjustable 26" to 36" high worksurface with grounding lug.
- 2500 CFM - 120V 1hp Direct drive motor.
- Built in spark arrestor.
- Replaceable fire retardant pleated air filters.
- 4 additional 110V outlets & overhead light.



Replaceable High Capacity Filter System

Model Number	Overall Dimensions
GBSC-2500	48"W x 36"D x 97"H



Booth Mounted Tables

- Heavy 11 gauge steel angle frame.
- 19.5"D frame mounts to GMI welding booths.
- Come standard in either half fire brick/half grate or 3/8" steel work surfaces.
- Grate top tables include slag shield.
- Requires booth mounting plates.
- HD Version available.



Pictured: Side to Side Mounted 3/8" Steel Table

Side to Side Mount

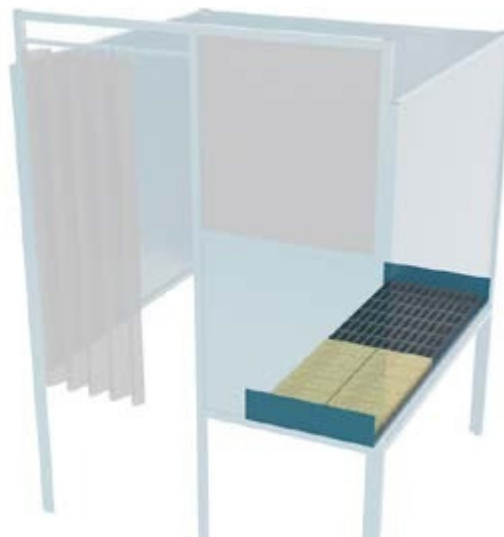
Booth Width	Surface Type	Surface Size	Type	Part No.:
48"W	Half Fire Brick/ Half Grate	Brick: 2 Rows of 5 Grate: 19"D x 23"W	Starter	EL-948.S
			Add-On	EL-948.A
60"W	Half Fire Brick/ Half Grate	Brick: 2 Rows of 6 Grate: 19"D x 31"W	Starter	EL-960.02.S
			Add-On	EL-960.02.A
72"W	Half Fire Brick/ Half Grate	Brick: 2 Rows of 8 Grate: 19"D x 35"W	Starter	EL-972.02.S
			Add-On	EL-972.02.A
48"W	3/8" Steel Top	19.25"D x 47.25"W	Starter	EL-948.S.STL
			Add-On	EL-948.A.STL
60"W	3/8" Steel Top	19.25"D x 59.25"W	Starter	EL-960.02.S.STL
			Add-On	EL-960.02.A.STL
72"W	3/8" Steel Top	19.25"D x 71.25W	Starter	EL-972.02.S.STL
			Add-On	EL-972.02.A.STL

**NOTE: Side to Side Tables Available for HD Booths.
Add HD to the Part No. / Example: ELHD-960.02.S**



Front to Rear Mount

Booth Depth	Surface Type	Surface Size	Booth Type	Part No.:
60"D	Half Fire Brick/ Half Grate	Brick: 2 Rows of 6 Grate: 19"D x 30"W	Free Standing	EL-960
			Wall Mount	EL-960.01
72"D	Half Fire Brick/ Half Grate	Brick: 2 Rows of 8 Grate: 19"D x 34"W	Free Standing	EL-972
			Wall Mount	EL-972.01
60"D	3/8" Steel Top	19.25"D x 58.00"W	Free Standing	EL-960.STL
			Wall Mount	EL-960.01.STL
72"D	3/8" Steel Top	19.25"D x 70.00"W	Free Standing	EL-972.STL
			Wall Mount	EL-972.01.STL



Small Arc Welding Tables

- All welded construction of heavy 11 gauge steel.
- Worksurface height: 34".
- Standard 1.5" x 3/16" bar grate work surface.
- Optional 3/8" steel top reinforced to prevent warping.
- All models include floor anchor pads.

Table Size	Grate Top Table	3/8" Steel Top Table
30"W x 24"D x 34"H	GT-774	GT-774.STL
36"W x 25"D x 34"H	GT-776	GT-776.STL
48"W x 25"D x 34"H	GT-778	GT-778.STL



OPTIONS

Side & Back Shields



Add .SS to Model #

- 14 ga Side and back shields
- 24"H from worksurface
- Bolts to worktable frame

Side Tool Box



GT-TB-100

- 16 Gauge steel construction
- 13"W x 24"D x 13"H
- Bolts to work table frame

Curtain Surround



Add .CO to Model #

- Curtain bar 78" from floor
- Includes (4) 60"W Curtains
- Side shield recommended (w/ Side shields pictured)

Back Shield w/ Curtain



Add .BSCO to Model #

- 26"H Back shield
- Curtain bar 78" from floor
- Includes (2) 60"W Curtains

Wall Mounted Arc and Gas Welding Tables

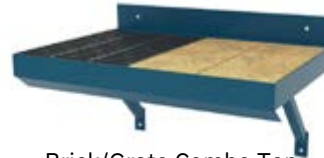
- Frame features 7 and 11 gauge steel construction.
- Available with a grate, 3/8" steel, or combination brick worksurfaces.
- Arc spatter shield on front edge of table.
- Optional 24"H side shields.
- Optional torch clips for gas welding stations.



Grate Top



3/8" Steel Top



Brick/Grate Combo Top



Brick/Steel Combo Top

Table Size	Grate Top	3/8" Steel Top	Brick/Grate Combo	Brick/Steel Combo
36"W x 24"D	GT-673	GT-673.STL	GT-673.BR	GT-673.STL-BR
48"W x 24"D	GT-674	GT-674.STL	GT-674.BR	GT-674.STL-BR

Standard Side Shield

GT-673.SS

Side Shield w/ Hose Guard

GT-673.SSHG

Torch Clip for Gas Welding

TC-100

Arc / Gas Layout Tables

- All welded construction of heavy 11 gauge steel.
- Work surface height: 34".
- Firebrick worksurface includes raised grounding rails.
- 3/8" Steel top is reinforced to prevent warping.
- All models include floor anchor pads.



GT-7.STL - Steel Top Layout Table

Table Size	Grouted Brick Top	3/8" Steel Top
30"W x 25"D x 34"H	GT-2	GT-2.STL
50"W x 25"D x 34"H	GT-4	GT-4.STL
72"W x 41"D x 34"H	GT-7	GT-7.STL
91"W x 41"D x 34"H	GT-8	GT-8.STL

Shielded Arc / Gas Welding Tables

- All welded construction of heavy 11 gauge steel.
- Work surface height: 34".
- Grouted firebrick worksurface includes raised grounding rails.
- 3/8" Steel top is reinforced to prevent warping.
- Side/Back shield options in 12"H and 24"H.
- All models include floor anchor pads.



GT-2-12 Layout Table

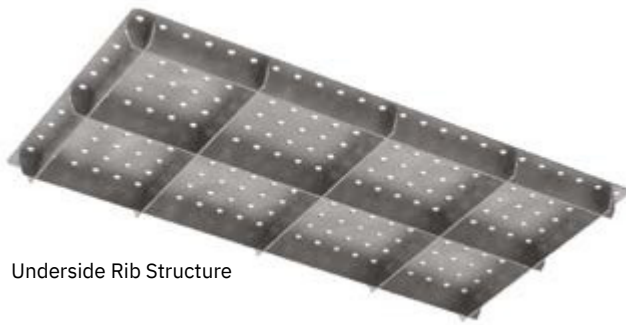


GT-4-24.STL Layout Table

Table Size	Side/Back Shield Height	Grouted Brick Top	3/8" Steel Top
30"W x 25"D x 46"OAH	12"H Above Worksurface	GT-2-12	GT-2-12.STL
50"W x 25"D x 46"OAH	12"H Above Worksurface	GT-4-12	GT-4-12.STL
30"W x 25"D x 58"OAH	24"H Above Worksurface	GT-2-24	GT-2-24.STL
50"W x 25"D x 58"OAH	24"H Above Worksurface	GT-4-24	GT-4-24.STL

Layout Platen Tables

- All welded construction.
- 3/16" Thick top and 2" tall rib structure provides a flat worksurface and prevents warping.
- Laser cut 16mm holes for clamps and fixtures.
- 1-1/2" Heavy wall tube steel legs and lower braces.
- Available with 4" caster kit.



Underside Rib Structure



Table Size	Stationary Table	Mobile Table
36"W x 24"D x 34"H	PLT-3624	PLT-3624.P
48"W x 24"D x 34"H	PLT-4824	PLT-4824.P
48"W x 36"D x 34"H	PLT-4836	PLT-4836.P

Extreme Duty Tables

- All welded construction with 3-1/2" heavy wall tube legs and 3/8" plate steel top.
- Fixed lower shelf of 3/16" plate steel.
- Floor pads with 5/8" dia. floor anchor holes.



Up to 10,000 Lb. Capacity

Table Size	Part #
30"D x 48"W x 40"H	EX-3048
30"D x 60"W x 40"H	EX-3060
30"D x 72"W x 40"H	EX-3072
30"D x 84"W x 40"H	EX-3084
30"D x 96"W x 40"H	EX-3096

Table Size	Part #
36"D x 48"W x 40"H	EX-3648
36"D x 60"W x 40"H	EX-3660
36"D x 72"W x 40"H	EX-3672
36"D x 84"W x 40"H	EX-3684
36"D x 96"W x 40"H	EX-3696

GOA Four Station Gas Welding Table

- All welded construction of heavy 3/16” thick steel.
- Includes (2) 1/2” ball valves and (2) one way check valves on tower inlet.
- Gas distribution tower meets safety regulations.
- Fully grouted firebrick work surface.
- Four torch holders.
- Floor anchor pads.
- Optional welding packages.
- Optional storage drawers measure: 3”H x 12”W x 16”D.



GOA-4 - Four Station Table



Gas Dist. Tower - Close-Up View

OPTIONAL CUTTING & WELDING PACKAGE



Add .WP to Model #

- Oxygen and acetylene regulators
- 12’ Hoses
- Welding torches
- Goggles
- Strikers
- Cutting tips
- Cutting attachment
- Welding tips

Table Size	Worksurface Height	Side Shield Height	Base Table	Valves & Regulators Option	Welding Package Option	Drawer Option
50”W x 50”D	34”H	24”H	GOA-4	ADD .VR	ADD .WP	ADD .DWR
60”W x 60”D	34”H	24”H	GOA-5	ADD .VR	ADD .WP	ADD .DWR

Arc / Gas Welding Tables

- All welded construction of heavy 11 gauge formed channel with a fire resistant, asbestos-free fiber back panel.
- Work area measures 19"D X 32"W. (Per side)
- Choice of fire brick top with steel quench bucket or replaceable steel grate top with splash guard.
- Arc benches include two 60" X 48" smoke gray curtains on an adjustable curtain rod assembly.
- Welding and cutting package option. (Details on previous page)
- Avail. in RAL 9004 Frame/RAL 6029 Panels. (See Color Chart).



EL-15 - Two Station Gas Tables



EL-15



EL-16

Description	Gas/Arc Combination	Two Station Gas	Two Station Arc	Single Station Gas	Single Station Arc
Base Bench	EL-10	EL-15	EL-20	EL-16	EL-21
Bench w/manifold and station valves	EL-100	EL-150	N/A	EL-160	N/A
Bench w/manifold, valves, & regulators	EL-1000	EL-1500	N/A	EL-1600	N/A
Bench w/manifold, valves, regulators, & welding package	EL-10000	EL-15000	N/A	EL-16000	N/A



EL-10



EL-20



EL-21

Arc / Gas Welding Tables

- Constructed of 14 gauge formed channel legs with a heavy 11 gauge steel pan top and 16 gauge steel shelf.
- Two sizes to choose from: 36"W X 36"D or 60"W X 36"D.
- Work surface height: 34".
- Optional 34"H shield bolts into place. Shield on 5' benches includes upper fume cover.
- All shields are available with (3) - 4" X 18" #10 shade observation windows.
- Gas welding benches have pan worksurface that accommodates firebrick.
- Other options available: Lockable drawer, vise arm, & curtain rod assembly with (2) - #7 shade, smoke gray curtains.

**SELG-18****SELA-182****SELA-182.W**

Description	3' Bench W/O Side Shields	3' Bench W/ Side Shields	3' Bench W/ Side Shields and Windows
Arc Welding Bench - Steel Surface Gas	SELA-18	SELA-182	SELA-182.W
Welding Bench - Brick Surface	SELG-18	SELG-182	SELG-182.W

**SELA-211****SELA-2112****SELA-2112.W**

Description	5' Bench W/O Side Shields	5' Bench W/ Side Shields	5' Bench W/ Side Shields and Windows
Arc Welding Bench - Steel Surface	SELA-211	SELA-2112	SELA-2112.W
Gas Welding Bench - Brick Surface	SELG-211	SELG-2112	SELG-2112.W

**Drawer 14"W x
24"D x 4"H**

SEL-D

Vise Mounting Arm

SEL-VA

**Curtain Rod Assembly
3' Bench**

SEL-CA-36

**Curtain Rod Assembly
5' Bench**

SEL-CA-60

Three Station Welding Tables

- Constructed of 11 gauge steel base and 16 gauge steel upper assembly.
- Each of the three work areas measures 36"W X 36 1/2"D with an overall size of 108 1/2"L X 36 1/2"D X 65"H.
- Side shields are 34"H.
- Available with or without firebrick.
- Optional drawers measure 3"H X 14"W X 16"D and have a padlock hasp.



EL-209 - Steel Top Bench

Description	Gas Welding w/Brick	Gas Welding w/o Brick	Arc Welding
Three Station Bench	EL-109	EL-109.NB	EL-209
Three Station Bench w/ Drawer Option	EL-109.DW	EL-109.NB-DW	EL-209.DW

Hand Grinding Station

- All welded construction of 11 gauge steel.
- Replaceable steel grate surfaces measure 35"W x 24"D.
- 5" Tapered air vacuum outlet runs along the back of the bench.
- Hinged, locking door on the front of the bench allows easy cleaning of the work surface.
- 110V Outlets located on the front leg are wired to a 6' cord & plug. 36"W station has (1) duplex - 72"W station has (2) duplex outlets.
- Optional dust collection unit available.
- Floor anchor pads included.



GS-1067 - Dual Outlet Grinding Station

GSE-100 - Dust Collector
(Drum not incl.)

Description	Model Number	Size
Single Outlet Station - (1) 5" Outlet	GS-967	36"W x 37"D x 53"H
Dual Outlet Station - (2) 5" Outlets	GS-1067	72"W x 37"D x 53"H

Description	Model Number
Dust Collection Unit	GSE-100
Drum Base Dolly	GSE-DC

Open & Ducted Downdraft Tables

- All welded construction of heavy 7 and 11 gauge steel.
- Available in two standard sizes.
- Floor anchor pads are standard on all models.
- Tables feature 1/2" x 2" removable bar work surface.
- Optional hose mounting arm.
- Optional underside enclosure available with an access door for clean out and manual damper for 12" exhaust duct hookup.



GFM-900.VH - Cutting Table w/ Vent Connection



GFM-900.VH



GFM-900

Model Number	Description	Dimensions
GFM-900	Cutting Table - Open Bottom	58.50"W x 41"D x 34"H
GFM-900.C	Cutting Table - w/ Lower Slag Pan	58.50"W x 41"D x 34"H
GFM-900.VH	Cutting Table - Bottom Enclosure - 12" Dia. Ventilation Connection	58.50"W x 41"D x 34"H
GT-520	Cutting Table - Lower Slag Pan	36"W x 24"D x 34"H
GT-520.H	Cutting Table - Lower Slag Pan - 12" Square Burn Out Hole	36"W x 24"D x 34"H
GT-520.VH	Cutting Table - Bottom Enclosure - 12" Dia. Ventilation Connection	36"W x 24"D x 34"H
GFM-SWA	Optional Swivel Hose Mounting Arm	36"H x 22"W



GT-520



GT-520.H



GT-520.VH

Self Contained Filtered Downdraft Tables

The PDT Series downdraft tables offer a fully self contained downdraft table, meaning all you have to do is plug it in and go to work. Welded construction, utilizing 12ga steel to last in high use educational and industrial applications.

- Exceeds 250 feet per minute of downdraft suction.
- Dirty air is run through a highly efficient nanofiber fire retardant cartridge filter.
- Clean air is exhausted to the left of the workstation.
- Prewired LED light.
- 3 Level spark protection.



Nano Fiber Filter Access



Model No	Motor / CFM	Size
PDT-23	3/4 HP / 1500	33"W x 25"D x 75"H



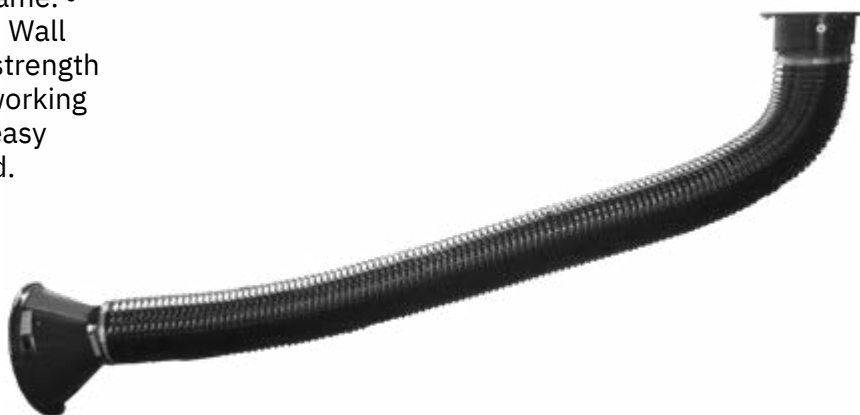
Model No	Motor / CFM	Size
PDT-34	3 HP / 3500	55"W x 36"D x 75"H



Model No	Motor / CFM	Size
PDT-46	5 HP / 6000	72"W x 48"D x 75"H

Telescopic Fume Arm - PVC Hose

- Black PVC elastic hose on telescopic frame.
- Hose rated to 195F (intermittent 206F)
- Wall mounting bracket included.
- Industrial strength and durability.
- Rotating swivel for full working range.
- Hood mounted grab handle for easy positioning.
- Built-in air damper on hood.



GFA-400-48 - Telescopic Arm

Part Number	Tube Diameter	Working Range	Hood Diameter	Duct Connection	CFM Range	Arm, Bracket, & Hood Weight
GFA-400-48	6"	4 to 7 Feet	13"	6"	600-1200 CFM	45 lbs.

Telescopic Fume Arm - Metal Tube

- Powder coated smooth tube construction.
- External joints and supports provide unrestricted airflow.
- Flexible joints rated to 195F.
- Wall mounting bracket included.
- Rotating 350* swivel base.
- Industrial strength and durability.
- Full ring grab handle at hood end.
- Lever controlled, built-in air damper.



GFA-401-54 - Telescopic Arm

Part Number	Tube Diameter	Working Range	Hood Diameter	Duct Connection	CFM Range	Arm, Bracket, & Hood Weight
GFA-401-54	6"	4.5 to 6 Feet	13"	6"	600-1200 CFM	50 lbs.

Articulating Fume Arm - Jointed Tube

- Powder coated smooth tube construction.
- External joints and supports provide unrestricted airflow.
- Flexible joints rated to 195F.
- Wall mounting bracket included.
- Rotating 350° swivel base.
- Industrial strength and durability.
- Full ring hood & tube grab handles.
- Lever controlled, built-in air damper.



GFA-500-84 - Jointed Fume Arm

Part Number	Tube Diameter	Arm Length	Hood Diameter	Duct Connection	CFM Range	Arm, Bracket, & Hood Weight
GFA-500-84	6"	7 Feet	13"	6"	600-1200 CFM	60 lbs.
GFA-500-120	6"	10 Feet	13"	6"	600-1200 CFM	66 lbs.
GFA-500-168	6"	14 Feet	13"	6"	600-1200 CFM	75 lbs.

Fume Arm Filtration Unit

- Efficient filtration of fumes and dust from welding and grinding operations.
- Heavy gauge powder coated fan assembly.
- Industrial strength fan with aluminum impeller.
- Replaceable 26" FR nanofiber filter, MERV 15 rated.
- Wall mounting bracket included.
- Dual arm unit includes Y connection ducting.



GFAF-200-2 - Filtration Unit
*Fume Arms Not Incl.



GFAF-150-1 - Filtration Unit
*Fume Arm Not Incl.

Part Number	Description	Motor	Nominal Capacity	Connection	Power Supply
GFAF-150-1	Single Arm Filter	1.5 HP	900 CFM	6"	110V or 220V / 60Hz / 1P
GFAF-200-2	Dual Arm Filter	2 HP	1600 CFM	8" to (2)6"	110V or 220V / 60Hz / 1P

Horizontal Draw Fume Vent Body

- All welded construction of 14 gauge steel.
- Recommended for exhausting any GMI welding booth.
- Mounts to the wall above welding table.
- Two 2"H air intakes run the width of the hood.
- 12" diameter outlet with manual damper.

Model Number	Size
GAV-1.STR	28"W x 13"D x 42"H
GAV-20	50"W x 13"D x 42"H



GAV-1.STR - Vent Body

Overhead Exhaust Hoods - Hanging

- All welded construction of 14 gauge steel.
- 12in diameter exhaust opening w/ manual damper.
- Includes four hanging brackets for ceiling mounting.
- Recommended for overhead exhausting of GOA-4 & GOA-5 oxy-acetylene welding tables.

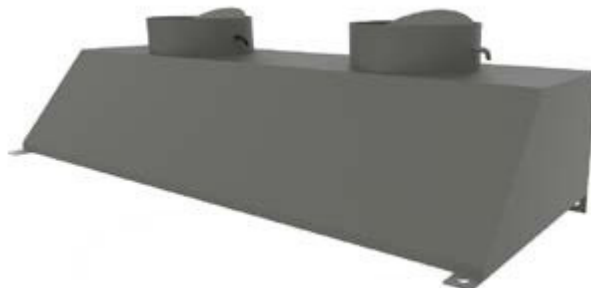
Model Number	Size
GAV-4	36"W x 36"D x 54"H
GAV-5	48"W x 48"D x 54"H



Overhead Exhaust Hoods - Wall Mounted

- All welded construction of 16 gauge steel.
- 12in diameter exhaust w/ manual damper.
- Tapered hood directs fumes into exhaust ports.
- Can be wall mounted or suspended.
- Designed for use over in-line booths or tables.

Model Number	Size	Exhaust Ports
GAV-140.D	36"W x 22"D x 15"H	1
GAV-160.D	48"W x 22"D x 15"H	1
GAV-180.D	60"W x 22"D x 15"H	2
GAV-190.D	72"W x 22"D x 15"H	2

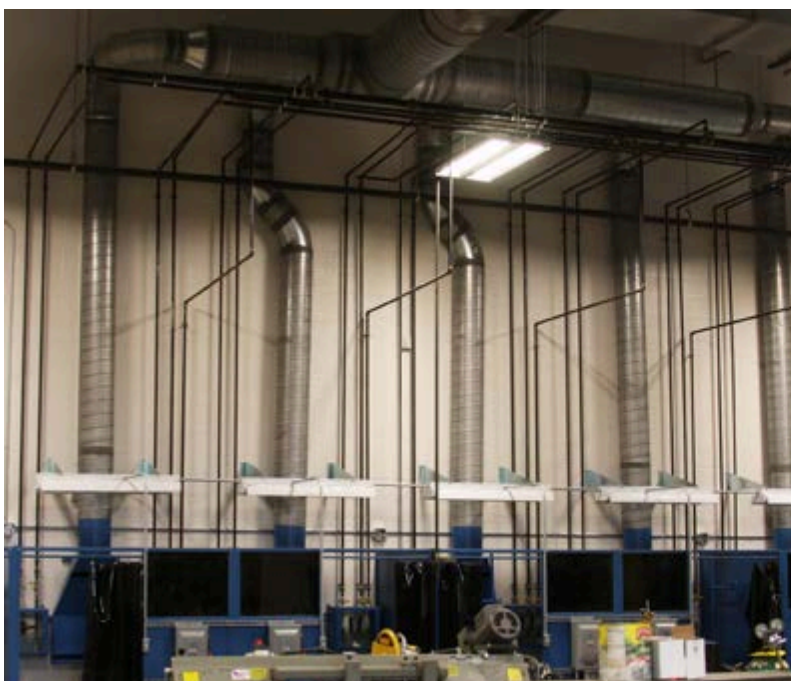
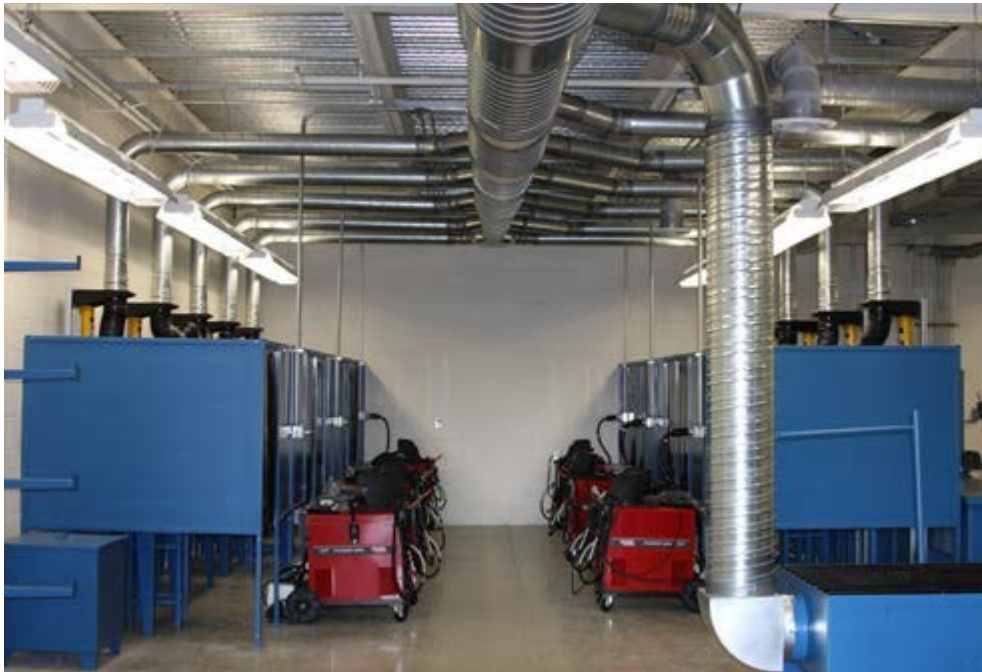


Ventilation Exhaust Systems

GMI offers a wide variety of options for welding ventilation systems. From initial site planning to installation, our staff can provide solutions from individual components and parts to complete turnkey packages.

We offer adjustable collection arms, overhead exhaust hoods, downdraft systems, duct systems, exhaust fans, filtered collection units, and air make-up systems.

Our goal is to ensure you receive the ideal solution for your project.



Weld Position Stands - Table Mounted

- All welded construction.
- Designed for GMI arc or gas welding tables.
- Brick top mount features a bracket to clamp around the worksurface.
- Grate or steel top version bolts through surface.
- Available in RAL 9004 (See Color Chart).

Size	Description
GWP-1	Brick Top Table Mount
GWP-2	Grate or Steel Top Table Mount



GWP-2
Grate Top Table Mounted

Weld Position Stands - Free Standing

GT-14 - Standard Model:

- Heavy duty all welded construction.
- Maximum height: 78"
- 4"C clamp mounted to extending/swiveling arm.
- 18"W x 18"D height adjustable, removable worktable.
- Arm & table rotate 360 degrees.
- Floor anchoring holes in base.
- Available in RAL 9004 (See Color Chart).

Size	Description
GT-14	Standard Free Standing Positioner



Quench Tanks

- All welded construction of 11 gauge steel.
- Removable cover and 4"H legs.
- 3/4" NPT drain and 3/4" NPT overflow.

Size	Steel Part Number	Stainless Part Number
24"W x 24"D x 24"H	GQT-1022	GQT-1022.SS
36"W x 24"D x 24"H	GQT-2022	GQT-2022.SS
48"W x 24"D x 24"H	GQT-3022	GQT-3022.SS
60"W x 24"D x 24"H	GQT-4022	GQT-4022.SS



GQT-1022 - Quench Tank

3/4" NPT Valves

Weld Coupon Bend Tester

- Heavy steel construction with plexiglass safety deflection guard.
- Loads & deforms weld samples in a controlled manner.
- Test samples up to 3/8" thick x 2"W x 10"L.
- 1" bending rollers and a 1" solid steel bending pin with 6" stroke distance creates a 2-1/4" bending radius.
- Available in RAL 6029 (See Color Chart).

Model Number	Size
GBT-9000.G	8"W x 6"D x 12.50"H



Welding Rod Holder

- 16 gauge welded steel construction.
- Hanging bracket designed to fit over GMI Welding tables.
- Divided into two compartments.

Model Number	Size
GQ-2	4"W x 4.50"D x 10"H



Support Stanchion

- Support framework for attaching fume arms and station drops.
- (2) vertical 1-5/8" Uni-strut uprights.
- Adjustable height cross support mounting bracket.
- Floor mounting base plates.
- Ideal for areas where wall mounting or additional support are required.

Model Number	Size
GB-SUP-120	120"H x 8"W



Gas Distribution Manifolds

CATT offers a full line of gas distribution manifolds available to fit most applications. Please contact your rep with your project requirements.

- Fuel Gas Manifolds.
- Oxygen/Inert Gas Manifolds.
- CO2 Manifolds
- Station Drops
- Regulators/Flow Meters



Replacement & Additional Parts

Fire Rated Replacement Bricks

- Rated for gas welding applications.
- 9"W x 4.50"D x 2.375"H.

Qty	Description	Part Number
1	Single Brick	RB-1
10	Set of 10 Bricks	RB-10
15	Set of 15 Bricks	RB-15
32	Set of 32 Bricks	RB-32
48	Set of 48 Bricks	RB-48
54	Set of 54 Bricks	RB-54



Replacement Weld Booth Curtains

- Tinted curtain with UV and blue light inhibitors to reduce harmful arc flash from welding.

Size	Description	Part Number
36"W x 48"L	Slide Open Style	C-36
48"W x 48"L	Slide Open Style	C-48
60"W x 48"L	Slide Open Style	C-60
9"W x 60"L	Single Strip Curtain	SC-9Y



One Piece - Slide Open Style



Strip Curtain - Walk Through Style

Replacement Steel Grate Worksurfaces

- 1/8" x 1-1/2"H bearing bars & 3/8" cross bars
- Unpainted surface is standard.
- 19W4 grate pattern

Size	Description	Part Number
30"W x 18"D	1-1/2"H Steel Grate	RG-1830
30"W x 24"D	1-1/2"H Steel Grate	RG-2430
36"W x 24"D	1-1/2"H Steel Grate	RG-2436
48"W x 24"D	1-1/2"H Steel Grate	RG-2448



Lincoln Electric

MIG Welders

TIG Welders

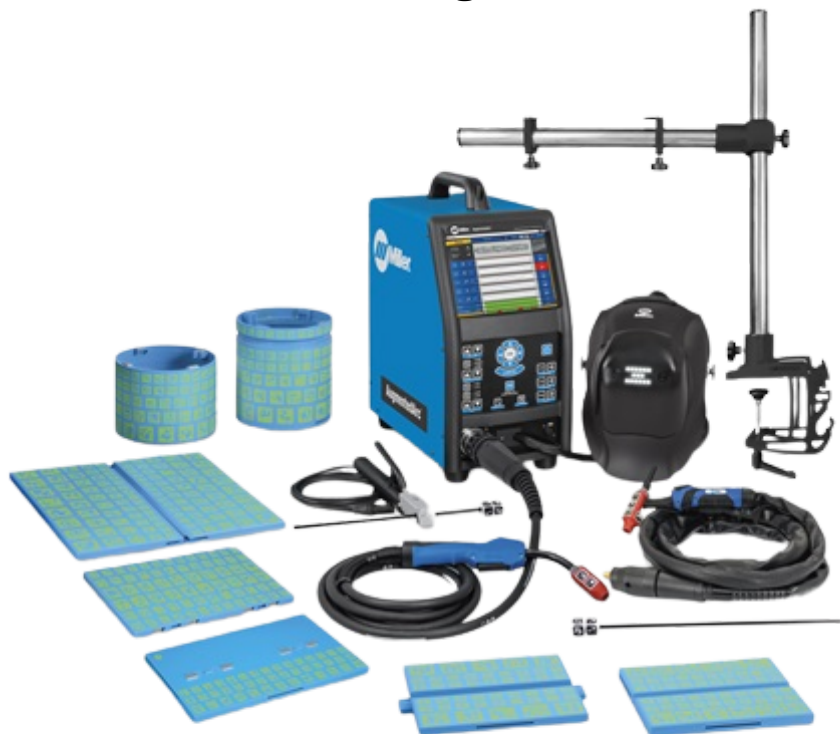
Stick Welders



Miller

LiveARC

AugmentedARC



Rod Storage Cabinet

- All welded construction of 14 gauge steel.
- Overall size: 48"W x 37"D X 64"H.
- Upper cabinet has 12 compartments to store welding electrodes.
- Lower cabinet has 6 compartments to store oxy-acetylene welding and TIG wires.
- Doors lock securely with a 3-point key locking system.



Description	Model Number
Rod Storage Cabinet	GRV-1776

Extreme Duty Storage



- All welded 12 ga steel general storage cabinet.
- Adjustable height 1500lb capacity shelves.
- Welded on 3/8" hinges.
- Three point lock system w/ padlocking handle.
- 6"H legs with floor mounting tabs.

O.A.H	36"W x 24"D	48"W x 24"D	60"W x 24"D	72"W x 24"D	Shelves
54"	EX-483-1	EX-484-1	EX-485-1	EX-486-1	3
66"	EX-603-1	EX-604-1	EX-605-1	EX-606-1	4
84"	EX-783-1	EX-784-1	EX-785-1	EX-786-1	4
90"	EX-843-1	EX-844-1	EX-845-1	EX-846-1	5



- All welded 12 ga steel storage cabinet.
- Adj. height shelves and six 6"H drawers.
- Welded on 3/8" hinges.
- Three point lock system w/ padlocking handle.
- 6"H legs with floor mounting tabs.

Overall Size	Model Number	Drawers	Shelves
48"W x 24"D x 84"H	EX-2100-48	6	4
60"W x 24"D x 84"H	EX-2100-60	6	4

SEE OUR FULL INDUSTRIAL CATALOG FOR MORE STORAGE OPTIONS

Extreme Duty Storage



- All welded 12 ga steel combo storage cabinet.
- Bin panel doors, dual shelf & tool panel interior.
- Three point lock system w/ padlocking handle.

Overall Size	Model Number	Small Bins	Shelves
36"W x 24"D x 84"H	EX-723-1BTPS	94	2
48"W x 24"D x 84"H	EX-724-1BTPS	142	2

Tool Storage Cabinets



- All welded 16 ga mobile tool storage box.
- Lift latch handles with 250lb capacity drawer glides.
- Integrated power and USB charging outlets.

Overall Size	Model Number	Drawers	Description
60"W x 28"D x 41.75"H	IHLTB-750-PRO-10-60	10	Bottom Unit
60"W x 28"D x 24"H	IHLTB-500-TC-501-60	6	Top Chest

EX Series Lockers



- All welded 12 gauge steel storage locker.
- 1/2 Height openings & dual interior hooks.
- Three point lock system w/ padlocking handles.

Overall Size	Model Number	Doors
14"W x 18"D x 84"H	EXL-1418-NDT2D	2
38"W x 18"D x 84"H	EXL-3818-NDT6D	6
50"W x 18"D x 84"H	EXL-5018-NDT8D	8
74"W x 18"D x 84"H	EXL-7418-NDT12D	12

CB Series Lockers



- All welded 18 gauge steel storage lockers.
- 1/2 Height openings & interior hooks.
- Sloped top to prevent clutter on top of cabinets.

Description	Model Number	Overall Size
Single Width Unit	CBR-1218-60SL-1000	12"W x 18"D x 60"H
3 Wide Bank Unit	CBR-1218-60SL-3000	36"W x 18"D x 60"H
Single Width Unit	CBR-1818-60SL-1000	18"W x 18"D x 60"H
3 Wide Bank Unit	CBR-1818-60SL-3000	54"W x 18"D x 60"H

SEE OUR FULL INDUSTRIAL CATALOG FOR MORE STORAGE OPTIONS

Vertical Material Storage



- Heavy 16 ga steel & 11 ga formed angle supports.
- Divided front storage for pipe and thin stock.
- Rear compartment for storage of sheet material.

Overall Size	Model	Vertical Storage	Rear Sheet
48"W x 54.50"D x 99"H	EL-200	(3) 16"W - 1 Divided	24"D

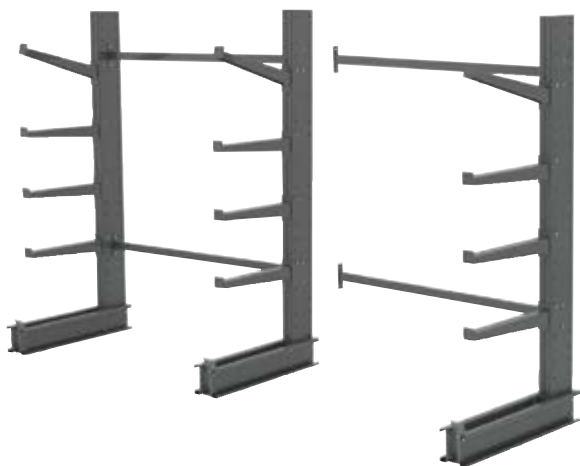
Side Loaded Sheet Rack



- Formed 11 ga steel upright supports & braces.
- Six all welded side load shelf assemblies.
- Rear compartment for storage of sheet material.

Overall Size	Model	Capacity	Shelves
102"L x 52"W x 72"H	EL-664	700lb per Shelf	6

High Capacity Cantilever Racks



- Heavy duty 7 ga steel arms hold 600lb per arm.
- Welded 11 ga steel uprights with 5500lb capacity.
- Starter and Add-on units.

Model Number Starter Unit	Model Number Add-On Unit	Description	Arms Std/Incline
GMCR-100-10-48-S	GMCR-100-10-48-A	Single Sided - 48"W	3 / 1
GMCR-100-10-60-S	GMCR-100-10-60-A	Single Sided - 60"W	3 / 1
GMCR-100-10-72-S	GMCR-100-10-72-A	Single Sided - 72"W	3 / 1

Open Shelving



- 13 ga Formed uprights & 16 ga reinforced shelves.
- 400lb Capacity adjustable height shelves.
- Rear and side anti-sway support bracing.

Depth	24"W x 84"H	30"W x 84"H	36"W x 84"H	48"W x 84"H
18"D	GR-1824-84	GR-1830-84	GR-1836-84	GR-1848-84
24"D	GR-2424-84	GR-2430-84	GR-2436-84	GR-2448-84
30"D	GR-3024-84	GR-3030-84	GR-3036-84	GR-3048-84

SEE OUR FULL INDUSTRIAL CATALOG FOR MORE STORAGE OPTIONS

Extreme Duty Workbenches



- Welded 1/4" thick 2" x 2" angle steel legs.
- Heavy 7ga steel top hold loads up to 10,000 lbs.
- Lower shelf for additional storage.

Depth	48"W x 36"H	60"W x 36"H	72"W x 36"H	84"W x 36"H
30"D	EXW-304-1	EXW-305-1	EXW-306-1	EXW-307-1
36"D	EXW-364-1	EXW-365-1	EXW-366-1	EXW-367-1



- 7ga formed steel legs adjust from 30"H to 40"H.
- Heavy 7ga steel top hold loads up to 8,000 lbs.
- Lower shelf for additional storage.

Depth	Adj. Height	48"W	60"W	72"W
30"D	30"H - 40"H	EXW-304-ADJ	EXW-305-ADJ	EXW-306-ADJ
36"D	30"H - 40"H	EXW-364-ADJ	EXW-365-ADJ	EXW-366-ADJ

BA Series Workbenches



- Constructed from 12 & 14 gauge steel.
- Adjustable height legs with lower shelf.
- Upper & lower brace supports for added capacity.

Worksurface	Depth	Adj. Height	48"W	60"W	72"W
Hardwood	30"D	27"H - 36"H	BA-304M-1	BA-305M-1	BA-306M-1
Hardwood	36"D	27"H - 36"H	BA-364M-1	BA-365M-1	BA-366M-1
Painted Steel	30"D	27"H - 36"H	BA-304S-1	BA-305S-1	BA-306S-1
Painted Steel	36"D	27"H - 36"H	BA-364S-1	BA-365S-1	BA-366S-1

EXM Mobile Bench



- All welded 12ga steel cabinet and 7ga worksurface.
- Four 4"H drawers on 250lb ball bearing glides.
- Welded hinges & solid steel padlocking handle.

Overall Size	Model Number	Drawers	Shelves
36"W x 24"D x 39.50"H	EXM-800-36	(4) 4"H	1 Adj./1 Fixed
48"W x 24"D x 39.50"H	EXM-800-48	(4) 4"H	1 Adj./1 Fixed

SEE OUR FULL INDUSTRIAL CATALOG FOR MORE WORKSPACE OPTIONS

Our Other Product Lines

Industrial Furniture

Modular Cabinets • Workbenches • Tool Cabinets • Storage Cabinets • Material Storage • Greenhouse



Computer & Office Furniture

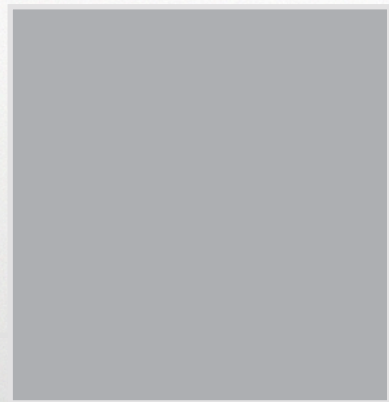
Computer Desk • Art & Drafting • Instructor & Executive Desks • Conference & Gathering • Office Storage



Cosmetology Labs

Styling / Barber Stations • Styling Chairs • Hair Wash Stations • Drying Chair • Manicure & Pedicure Stations





CATT

Career and Technical Training, LLC

**128 N 6th St UNIT C,
Windsor, CO 80550**



Contact Us for Info and Ordering:

jslupe@catt-llc.com

www.catt-llc.com

970-686-0379